



HOT SELLING

CHINA GTL TOOLS GROUP LTD

What's App.: 008613805873025 | www.gtlprofessional.com |
Contact: Mr Andy | sales@gtlprofessional.com

2026
PROFESSIONAL GARDEN POWER TOOLS





COMPANY PROFILE **GTL**

Established in the year 2005 , our factory is one of the most professional enterprises in China who specialize in developing and producing garden power tools . we gain an outstanding reputaion for the sophisticated technology , skillful manufacture and excellent quality of the electric and gasoline garden tools.With strong R&D capacity,full productive capacity,and OEM capactiy,we are capable of providing customers with superior products and the best service!

Having been in this line for more than 20 years GTL Tools is now a primay supplier specialized in hand tools , power tools ,garden tools and related spare parts & accessories in China for professional and DIY users worldwide..

We can offer you the choice of over 5,000 different products from hand tools , garden tools , power tools , air tools and gasoline tools that for you to make an order and combine them into one container easily.

We have been perfecting our knowledge on finding the balance between producing high quality products and maintaning low prices to provide our clients the great benefits from our superior products and best service.

We have more than 5,000 total items available for your selection for mixed container shipment . We welcome your OEM project..

You are also warmly welcomed to be our Authorized Exclusive Dealer of our GTL Brand in your region.

If you are our exclusive authorized dealer in your region,we will offer you the most competitive prices,the most favorable cooperation conditions and the most reliable after-sale services... We will try our best to support you to win the market... since your success in the market is also our success in your region....

We warmly welcome you to cooperate with us to create a win-win future!



GS2500G

GASOLINE CHAIN SAW



- Engine type: Air cooled,two stroke single cylinder
- Displacement: 25.4cc
- Rated power output: 0.9KW/1.2HP
- Idling speed: 3000±200rpm
- Gasoline mixing ratio: 1: 25
- Carburetor: Diaphragm type
- Chain pitch: 3/8inch
- Bar& Chain: 10"/12"
- Color Box Packing

GS2500D

GASOLINE CHAIN SAW



- Engine type: Air cooled,two stroke single cylinder
- Displacement: 25.4cc
- Rated power output: 0.9KW/1.2HP
- Idling speed: 3000±200rpm
- Gasoline mixing ratio: 1: 25
- Carburetor: Diaphragm type
- Chain pitch: 3/8inch
- Bar& Chain: 10"/12"
- Color Box Packing

GS2500N

GASOLINE CHAIN SAW



- Engine type: Air cooled,two stroke single cylinder
- Displacement: 25.4cc
- Rated power output: 0.9KW/1.2HP
- Idling speed: 3000±200rpm
- Gasoline mixing ratio: 1: 25
- Carburetor: Diaphragm type
- Chain pitch: 3/8inch
- Bar& Chain: 10"/12"
- Color Box Packing

GS4500P/GS5200P

GASOLINE CHAIN SAW



- Engine type: Air cooled,two stroke single cylinder
- Displacement: 45cc/52cc
- Rated power output: 1.8KW/2.5HP,2.0KW/2.7HP
- Idling speed: 3000±200rpm
- Gasoline mixing ratio: 1: 25
- Carburetor: Diaphragm type
- Chain pitch: 0.325inch
- Bar& Chain: 18"/20"
- Color Box Packing

GS4500Q/GS5200Q

GASOLINE CHAIN SAW



- Engine type: Air cooled,two stroke single cylinder
- Displacement: 45cc/52cc
- Rated power output: 1.8KW/2.5HP,2.0KW/2.7HP
- Idling speed: 3000±200rpm
- Gasoline mixing ratio: 1: 25
- Carburetor: Diaphragm type
- Chain pitch: 0.325inch
- Bar& Chain: 18"/20"
- Color Box Packing

GS5200LA/GS5800LA

GASOLINE CHAIN SAW



- Engine type: Air cooled,two stroke single cylinder
- Displacement: 52cc/58cc
- Rated power output: 2.0KW/2.7HP,2.4KW/3.3HP
- Idling speed: 3000±200rpm
- Gasoline mixing ratio: 1: 25
- Carburetor: Diaphragm type
- Chain pitch: 0.325inch
- Bar& Chain: 20"/22"
- Color Box Packing

BC330/BC430/BC520

GASOLINE BRUSH CUTTER



- Engine type: Air cooled,two stroke single cylinder
- Displacement: 33cc/42.7cc/52cc
- Rated power output: 0.85KW/1.25KW/1.45KW/,1.2HP/1.7HP/2HP
- Idling speed: 3000±200rpm
- Gasoline mixing ratio: 1: 25
- Shaft diameter: 26/28mm
- Cutting type: nylon cutter and 3-tooth blade
- Packing way: Color box

BC330L/BC430L/BC520L

GASOLINE BRUSH CUTTER



- Engine type: Air cooled,two stroke single cylinder
- Displacement: 33cc/42.7cc/52cc
- Rated power output: 0.85KW/1.25KW/1.45KW/,1.2HP/1.7HP/2HP
- Idling speed: 3000±200rpm
- Gasoline mixing ratio: 1: 25
- Shaft diameter: 26/28mm
- Cutting type: nylon cutter and 3-tooth blade
- Packing way: Color box

BC330G/BC430G/BC520G

GASOLINE BRUSH CUTTER



- Engine type: Air cooled,two stroke single cylinder
- Displacement: 33cc/42.7cc/52cc
- Rated power output: 0.85KW/1.25KW/1.45KW/,1.2HP/1.7HP/2HP
- Idling speed: 3000±200rpm
- Gasoline mixing ratio: 1: 25
- Shaft diameter: 26/28mm
- Cutting type: nylon cutter and 3-tooth blade
- Packing way: Color box

BC530B/BC620B

ANTI-VIBRATION BRUSH CUTTER

CE  EPA E-V



- Engine type: Air cooled, two stroke single cylinder
- Displacement: 52cc/62cc
- Rated power output: 1.45KW//2HP, 2.4KW/3.2HP
- Idling speed: 3000±200rpm
- Gasoline mixing ratio: 1: 25
- Shaft diameter: 26/28mm
- Cutting type: nylon cutter and 3-tooth blade
- Packing way: Color box

BC620/BC720

GASOLINE BRUSH CUTTER

CE  EPA E-V



- Engine model: 1E48F/1E50F
- Engine type: Air-cooled, Two-stroke, Single Cylinder Engine
- Engine power: 3.2HP(2.4kw/6000rpm)/3.8HP(2.8kw/6000rpm)
- Displacement: 62cc/72cc
- Carburetor: Diaphragm Type
- Gasoline/2-cycle Oil Mixing ratio: 25: 1
- Idling speed: 2800±3200rpm
- Fuel tank capacity: 1200ml
- Pipe diameter: Φ28mm/Φ30mm
- Line max Cutting path: 44cm(Φ2.5mm)
- Blade diameter: 230mm(3 teeth); 255mm (8 teeth)
- 20FT/40FT/40HQ: 580/1160/1400pcs

BC720B

ANTI-VIBRATION BRUSH CUTTER

CE  EPA E-V



- Engine type: Air cooled, two stroke single cylinder
- Displacement: 72cc
- Rated power output: 2.8KW/3.8HP
- Idling speed: 3000±200rpm
- Gasoline mixing ratio: 1: 25
- Shaft diameter: 28/30mm
- Cutting type: nylon cutter and 3-tooth blade
- Packing way: Color box
- N.W/G.W: 12.5KG/9.5KG

KAWASAKI—BC450K

GASOLINE BRUSH CUTTER

CE  EPA E-V

Kawasaki TJ45E



- Mating power: Kawasaki TJ45E
- Discharging Capacity: 45.4CC
- Standard power: 1.6KW/7500rpm
- Idling Speed: 3000r/min
- Mixed fuel ratio: 50: 1(Gasoline50: Two-cycle oil FB1)
- Form of carburetor: diaphragm with prime
- Cutting Width for Blade: 255mm
- Cutting Width for Trimmer: 415mm
- Fuel Capacity: 1100ml/900ml
- Cutter Type: nylon cutter and 3-tooth blade

KAWASAKI—BC530K

GASOLINE BRUSH CUTTER

CE  EPA E-V

Kawasaki TJ53E



- Mating power: Kawasaki TJ53E
- Discharging Capacity: 53.2CC
- Standard power: 2.0kw/7500rpm
- Idling Speed: 3000r/min
- Mixed fuel ratio: 50: 1(Gasoline50: Two-cycle oil FB1)
- Form of carburetor: diaphragm with prime
- Cutting Width for Blade: 255mm
- Cutting Width for Trimmer: 415mm
- Fuel Capacity: 1100ml/900ml
- Cutter Type: nylon cutter and 3-tooth blade

PPS250A

POLE PRUNER

CE  EPA E-V



- Engine: 1E34F
- Displacement: 25.4cc
- Output power: 0.75kw/7500rpm
- Fuel tank capacity: 650ml
- Guide bar: 10/12inch
- Pitch: 3/8inch
- Shaft length: 2.0m
- 1m extension shaft available
- 20FT/40FT/40HQ: 595/1190/1360pcs

PPS250T

GASOLINE POLE PRUNER

CE  EPA E-V



- Engine: 1E34F
- Displacement: 25.4cc
- Output power: 0.75kw/7500rpm
- Fuel tank capacity: 750ml
- Guide bar: 10/12inch
- Pitch: 3/8inch
- Telescopic shaft: 2.5m-4m
- N.W.: 8.0kgs
- 20FT/40FT/40HQ: 220/440/540pcs

BC430P/BC520P/BC620P

GASOLINE BRUSH CUTTER WITH WHEELS

CE  EPA E-V



- Engine type: Air cooled, two stroke single cylinder
- Displacement: 42.7cc/52cc/62cc
- Rated power output: 1.25KW/1.45KW /2.4KW, 1.7HP/2HP/3.2HP
- Idling speed: 3000±200rpm
- gasoline mixing ratio: 1: 25
- shaft diameter: 26/28mm
- cutting type: nylon cutter and 3-tooth blade
- Packing way: Color box

BG430K/BG520K

BACKPACK GASOLINE BRUSH CUTTER

CE  EPA E-V



- Engine model: 1E40F-5/1E44F-5
- Engine power: 1.45KW/1.6KW
- Displacement: 42.7cc/52cc
- Gasoline/2-cycle Oil Mixing ratio: 25: 1
- Carburetor: Diaphragm Type
- Fuel tank capacity: 1200ml
- Ignition system: CDI
- 20FT/40FT/40HQ: 450/950/1100pcs

BC35X

4 STROKE BRUSH CUTTER

CE EPA E-V

Similar to Honda GX35

4-STROKE



- Engine: 35cc 4 stroke GX35
- Starting system: Recoil starter
- Bore stroke: 39x30mm
- Carburetor: Diaphragm type
- Max power: 1.2kw(1.6hp)
- Fuel tank capacity: 100ml
- Line max cutting path: 44mm
- Blade diameter: 230mm(3T)
- Noise level: 100dB(A)
- Vibration: 3.9(m/sec)
- 20FT/40FT/40HQ: 580/1160/1400pcs

4 in 1

MULTIFUNCTIONAL GARDEN TOOLS

CE EPA E-V



- Engine type: Air cooled,two stroke single cylinder
- Displacement: 52cc
- Rated power output: 1.45KW//2HP
- Idling speed: 3000±200rpm
- Gasoline mixing ratio: 25: 1
- Fuel tank capacity: 0.7L
- Total machine length: 165cm
- Hedge trimmer: Trimmer blade length: 440mm
- Brush cutter: 3 metal blade, cutting dia: 255mm
- Edge trimmer: nylon thread head: 2x2.5mx2.55mm
- Pole chain saw: Chinese guide bar: 10", Chinese Chain

5 in 1

MULTIFUNCTIONAL GARDEN TOOLS

CE EPA E-V



- Engine type:Air cooled,two stroke single cylinder
- Displacement:52cc
- Rated power output:1.45KW//2HP
- Idling speed:3000±200rpm
- Mixed fuel ratio:25:1
- Fuel tank capacity:1.2L
- Total machine length:165cm
- Hedge trimmer:trimmer blade length: 440 mm
- Brush cutter:3 metal blade, cutting dia: 255 mm
- Edge trimmer:nylon thread head: 2*2.5 m x 2.55mm
- Pole chain saw:Chinese guide bar: 10", Chinese Chain
- Olive shaker rake width:50cm

HT230D

GASOLINE HEDGE TRIMMER

CE EPA E-V



- Engine type: Air cooled,two stroke single cylinder
- Engine model: 1E32F
- Displacement: 22.5cc
- Rated power output: 0.8KW/1HP
- Idling speed: 3000±200rpm
- Gasoline mixing ratio: 1: 25
- Fuel tank capacity: 0.4L
- Cutting width: 28mm
- Blade length: 600mm

GD500A/GD600A

GASOLINE EARTH AUGER

CE EPA E-V



- Engine type: Air cooled,two stroke single cylinder
- Engine model: 1E44F-5/1E48F
- Displacement: 52cc/62cc
- Rated power output: 1.45KW/2HP,2.4KW/3.2HP
- Idling speed: 3000±200rpm
- Fuel tank capacity: 1.2L
- Bit diameter: 50/80/100/150/200/250/300mm

GD500B/GD600B

GASOLINE EARTH AUGER

CE EPA E-V



- Engine type: Air cooled,two stroke single cylinder
- Engine model: 1E44F-5/1E48F
- Displacement: 52cc/62cc
- Rated power output: 1.45KW/2HP,2.4KW/3.2HP
- Idling speed: 3000±200rpm
- Fuel tank capacity: 1.2L
- Bit diameter: 50/80/100/150/200/250/300mm

GD500C/GD600C

GASOLINE EARTH AUGER

CE EPA E-V



- Engine type: Air cooled,two stroke single cylinder
- Engine model: 1E44F-5/1E48F
- Displacement: 52cc/62cc
- Rated power output:1.45KW/2HP,2.4KW/3.2HP
- Idling speed: 3000±200rpm
- Fuel tank capacity: 1.2L
- Bit diameter: 50/80/100/150/200/250/300mm

GD500G/GD600G

GASOLINE EARTH AUGER



- Engine type: Air cooled,two stroke single cylinder
- Engine model: 1E44F-5/1E48F
- Displacement: 52cc/62cc
- Rated power output: 1.45KW/2HP,2.4KW/3.2HP
- Idling speed: 3000±200rpm
- Fuel tank capacity: 1.2L
- Bit diameter: 50/80/100/150/200/250/300mm

GD500AV

GASOLINE EARTH AUGER

CE EPA E-V



- Engine model: 1E44F-5II
- Engine type: Air cooled,2 stroke ,single cylinder
- Displacement: 52cc
- Engine power: 1.82kw/8000rpm
- Carburetor Type: Diaphragm Type
- Idling speed: 2700-3000r/min
- Fuel tank capacity: 1200ml
- Gear case output rate: 40: 1
- Gear case type: Diagonal gear wheel
- Output shaft size: 20/22mm

DS260B

PORTABLE DRILL

CE  EPA E-V



- Engine type: Air cooled, two stroke single cylinder
- Displacement: 25.4cc
- Rated power output: 0.7KW/0.9HP
- Idling speed: 3000±200rpm
- Drill Chuck: 3-16mm 1/2-20UNF
- Drill diameterlength: 13mmx230mm, 28mmx350mm
- Reduction ratio: 10.6: 1

GD1800

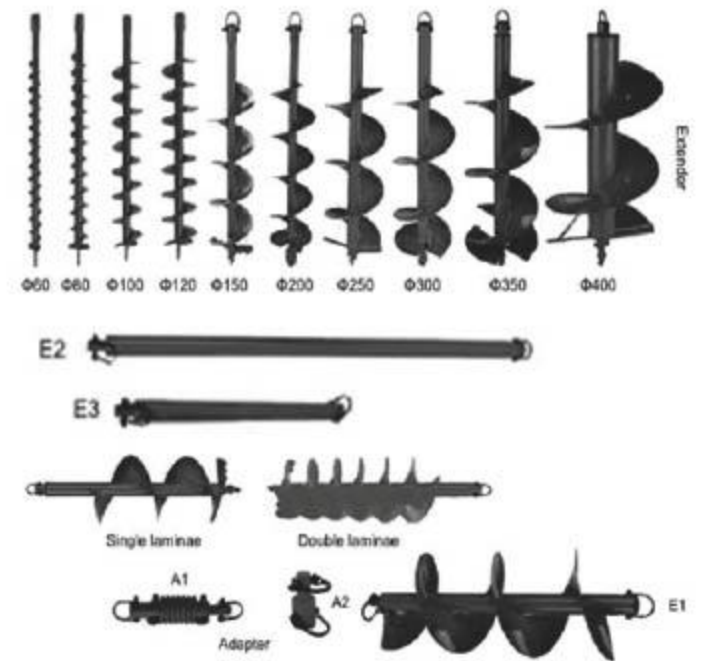
GASOLINE EARTH AUGER

CE  EPA E-V



- Engine model: **RV170 RATO engine**
- Displacement: 173cc
- Engine power: 6.5HP/3600rpm
- Power rating: 3.8kw
- Engine type: 4 stroke, air cooled
- Starting system: Recoil start
- Max torque(N.m/r/min): 7.5/2800
- Fuel tank capacity: 1.5L
- Oil diameter: 300/350/400cm
- 20FT/40FT/40HQ: 130/260/320/pcs

USUAL DRILL



Size	Φ40MM	Φ60MM	Φ80MM	Φ100MM	Φ120MM
Size	Φ150MM	Φ200MM	Φ250MM	Φ300MM	Φ400MM

EB260LD/EBV260LD

GASOLINE BLOWER/ VACUUM BLOWER

CE  EPA E-V



- Engine Displacement: 1E34F/25.4cc,(2-stroke)
- Function: Blower/Vacuum/Shredder
- Fuel ratio: 25: 1
- Power: 0.75kw
- Max speed: 7500rpm
- Fuel tank capacity: 0.7L
- Air outlet speed: ≥60m/s
- Air outlet flow: ≥0.13m³/s

EB260ALD

GASOLINE BLOWER

CE  EPA E-V



- Engine Displacement: 1E34FC/25.4cc,(2-stroke)
- Function: Blower
- Fuel ratio: 25: 1
- Power: 0.75kw
- Max speed: 7500 rpm
- Fuel tank capacity(L): 0.45
- Air velocity(m/s): ≥60
- Air volume(m³/s): ≥0.2

EBV260ALD

GASOLINE VACUUM BLOWER

CE  EPA E-V



- Engine Displacement: 1E34FC/25.4cc,(2-stroke)
- Function: Vacuum Blower&shredder
- Fuel ratio: 25: 1 • Power: 0.75kw
- Max speed: 7500 rpm
- Fuel tank capacity(L): 0.45
- Grass bag capacity(L): 45
- Air velocity(m/s): ≥60
- Air volume(m³/s): ≥0.2

GB430

BACKPACK BLOWER

CE  EPA E-V



- Engine Displacement: 1E40F-5A/42.7cc(2-stroke)
- Function: Blower
- Fuel ratio: 25: 1
- Power: 1.25kw
- Max speed: 7000 rpm
- Air outlet flow: 0.2m³/s
- Air outlet speed: 70m/s
- Fuel tank capacity: 1.2L

GB520

BACKPACK BLOWER

CE  EPA E-V



- Engine Displacement: 52cc(2-stroke)1900w
- Function: Blower
- Fuel ratio: 40: 1
- Air outlet flow: 0.3m³/s
- Fuel tank capacity: 1.5L
- Max speed: 8000rpm
- Package dimension: 450x415x535mm
- G.W/N.W: 8.0/7.0kg
- 20FT/40GQ: 280/680pcs

GB630

BACKPACK BLOWER

CE  EPA E-V



- Engine Displacement: 63cc(2-stroke)2200w
- Function: Blower
- Fuel ratio: 40: 1
- Air outlet flow: 18m³/s
- Fuel tank capacity: 2L
- Max speed: 8000rpm
- Package dimension: 450x415x535mm
- G.W/N.W: 8.0/7.0kg
- 20FT/40GQ: 280/680pcs

GB650

BACKPACK BLOWER

CE EPA E-V



- Engine: 1E48FF
- Engine Type: 2-stroke, Air-cooled
- Displacement : 65.6cc
- Power: 2.8kw
- Fuel Tank Capacity: 2L
- Fuel Mix Ratio: 30: 1
- Air Velocity: 69m/s
- Air Volume: 0.36m³/s

GB760

BACKPACK BLOWER

CE EPA E-V



- Engine Displacement: 76cc(2-stroke)3500w
- Function: Blower
- Fuel ratio: 40: 1
- Air outlet flow: 21m³/s
- Fuel tank capacity: 2.2L
- Max speed: 8000rpm
- Package dimension: 625x415x535mm
- G.W/N.W: 9.0/8.5kg
- 20FT/40GQ: 200/480pcs

GB760-4

BACKPACK BLOWER

CE EPA E-V



4-Stroke

- Engine Displacement: 76cc(4-stroke)2200w
- Function: Blower
- Air outlet flow: 19.5m³/s
- Fuel tank capacity: 2L
- Max speed: 8000rpm
- Package dimension: 450x415x535mm
- G.W/N.W: 8.0/7.0kg
- 20FT/40GQ: 280/680pcs

GT25/GT30

GASOLINE TILLER

CE EPA E-V



- Engine type: Air cooled,two stroke ,single cylinder
- Displacement: 42.7cc/52cc
- Rated power output:
- 1.25kw/1.7HP,1.45kw/2HP
- Idling speed: 3000±200rpm
- Working Width: 300mm
- Working Depth: 50-70mm

GT36

GASOLINE TILLER

CE EPA E-V



LONCIN

- Engine type: Air cooled,4 stroke,OHV
- Displacement: 139cc
- Rated power output: 2.2KW/3600RPM
- Working width: 36cm (4 blades)
- Working depth: 13-26cm
- Fuel tank volume : 1.2L
- Oil volume: 0.6L

GT59

GASOLINE TILLER

CE EPA E-V



- Engine type: Air cooled,4 stroke,OHV
- Displacement: 173cc
- Rated power output: 3.0KW/3600RPM
- Working width: 59cm (6 blades)
- Working depth: 13-26cm
- Fuel tank volume : 1.2L
- Oil volume: 0.6L

GT600

GASOLINE TILLER

CE EPA E-V



- Engine Type: OHV,25°Tilt, single cylinder,forced air cooling,4-stroke
- Displacement: 212cc
- Bore x stroke: 70x55mm
- Fuel tank capacity: 3.6L
- Starting System: Recoil Start
- Max Power7.0HP (4.0KW)/3600rpm
- Working width: 300-880 (mm)
- Working depth: 100-300 (mm)
- Gear Shifting: 1 Forward + 1 Reverse
- Blades Type: 24 Pcs/4Pcs×3(2+1)Groups
- Gearbox: Aluminum GEARBOX
- Transmission: Belt-Driven

GT750DA

GASOLINE TILLER

CE EPA E-V



- Engine Model170F
- Engine TypeOHV,25°Tilt,single cylinder, forced air cooling,4-stroke
- Displacement212CC
- Bore x stroke70*55mm
- Fuel tank capacity3.6L
- Starting SystemRecoil Start(Hand Start)
- Rated Power:7.0HP (5.0KW)/3600 RPM
- Max Power7.5HP (5.5KW)/3600 RPM
- Working width:550-800 (mm)
- Working depth:100-300 (mm)
- Gear Shifting:2 Forward , 1 Reverse
- Blades Type:24 Pcs/4Pcs×3(2+1)Groups
- Gearbox:Aluminum GEARBOX
- TransmissionBelt
- Transmission oil capacity: 0.95 L (transmission) / 0.6 L (engine)
- WheelOne pair of 400-8 wheels

GT750E

GASOLINE TILLER

CE EPA E-V



- Engine Type: OHV,25°Tilt, single cylinder, forced air cooling,4-stroke
- Displacement: 212CC
- Bore x stroke: 70x55mm
- Fuel tank capacity: 3.6L
- Starting System: Recoil Start(Hand Start)
- Rated Power: 7.0HP (5.0KW)/3600 RPM
- Max Power7.5HP (5.5KW)/3600 RPM
- Working width: 550-800 (mm)
- Working depth: 100-300 (mm)
- Gear Shifting: 2 Forward , 1 Reverse
- Blades Type: 24 Pcs/4Pcs×3(2+1)Groups
- Gearbox: Aluminum GEARBOX
- Transmission: Belt
- Transmission oil capacity: 0.95 L (transmission) / 0.6 L (engine)
- Wheel: One pair of 400-8 wheels
- Attachments: Two pcs Disc

GT85

GASOLINE TILLER

CE   EPA E-V



- Engine Type: OHV, 25° Tilt, single cylinder, forced air cooling, 4-stroke
- Displacement: 212CC
- Bore x stroke 70x55mm
- Fuel tank capacity 3.6L
- Starting System: Recoil Start (Hand Start)
- Rated Power: 7.0HP (5.0KW)/3600 RPM
- Max Power 7.5HP (5.5KW)/3600 RPM
- Working width: 550-800 (mm)
- Working depth: 100-300 (mm)
- Gear Shifting: 2 Forward, 1 Reverse
- Blades Type: 24 Pcs/4Pcs x 3(2+1) Groups
- Gearbox: Aluminum GEARBOX
- Transmission: Belt
- Transmission oil capacity 0.95 L (transmission) / 0.6 L (engine)
- Wheel: One pair of 400-8 wheels
- Attachments: Two pcs Disc

GT40

GASOLINE TILLER

CE   EPA E-V



- Engine Type: OHV 4-stroke, Tilt Cylinder, Air-cooled,
- Displacement: 212CC
- Max output : 7.5HP/3600RPM
- Fuel Tank capacity: 3.6L
- Oil tank capacity: 0.6L
- Fuel type: Unleaded gasoline
- Tilling width 36-40CM:
- Working depth : 17-35CM
- Gear Shifting: -1,0,1
- Starting system: Recoil start
- Transmission: Belt + Worm Gear

GT900N

GASOLINE TILLER

CE   EPA E-V



- Engine Model 170F
- Engine Type OHV, 25° Tilt, single cylinder, forced air cooling, 4-stroke
- Displacement 212CC
- Bore x stroke 70*55mm
- Fuel tank capacity 3.6L
- Starting System Recoil Start (Hand Start)
- Rated Power: 7.0HP (5.0KW)/3600 RPM
- Max Power 7.5HP (5.5KW)/3600 RPM
- Working width: 800-1100 (mm)
- Working depth: 100-300 (mm)
- Gear Shifting: 2 Forward, 1 Reverse
- Blades Type: 24 Pcs/4Pcs x 3(2+1) Groups
- Gearbox: cast-iron GEARBOX
- Transmission Gear-Driven
- Transmission oil capacity: 1.1 L (transmission) / 0.6 L (engine)
- Wheel One pair of 400-8 wheels

GT900C

GASOLINE TILLER

CE   EPA E-V



- Engine Model 170F
- Engine Type OHV, 25° Tilt, single cylinder, forced air cooling, 4-stroke
- Displacement 212CC
- Bore x stroke 70*55mm
- Fuel tank capacity 3.6L
- Starting System Recoil Start (Hand Start)
- Rated Power: 7.0HP (5.0KW)/3600 RPM
- Max Power 7.5HP (5.5KW)/3600 RPM
- Working width: 800-1100 (mm)
- Working depth: 100-300 (mm)
- Gear Shifting: 2 Forward, 1 Reverse
- Blades Type: 24 Pcs/4Pcs x 3(2+1) Groups
- Gearbox: cast-iron GEARBOX
- Transmission Gear-Driven
- Transmission oil capacity 1.1 L (transmission) / 0.6 L (engine)
- Wheel One pair of 400-8 wheels

GT1050

GASOLINE TILLER

CE   EPA E-V



- Engine Type: OHV, 25° Tilt, single cylinder, forced air cooling, 4-stroke
- Displacement: 212CC
- Bore x stroke: 70x55mm
- Fuel tank capacity: 3.6L
- Starting System: Recoil Start (Hand Start)
- Rated Power: 7.0HP (5.0KW)/3600 RPM
- Max Power: 7.5HP (5.5KW)/3600 RPM
- Working width: 1050-1400 (mm)
- Working depth: 100-300 (mm)
- Gear Shifting: 2 Forward, 1 Reverse
- Blades Type: 32 Pcs/(3+1) Group x 4PCS (Z041)
- Gearbox: cast-iron GEARBOX
- Transmission: Gear-Driven
- Transmission oil capacity: 1.65 L (transmission) / 0.6 L (engine)
- Wheel One pair of 400-8 wheels
- Attachments Two pcs Disc

GT1050D

GASOLINE TILLER

CE   EPA E-V



- Engine Type: OHV, 25° Tilt, single cylinder, forced air cooling, 4-stroke
- Displacement: 270CC
- Bore x stroke: 78x58mm
- Fuel tank capacity: 3.6L
- Starting System: Recoil Start (Hand Start)
- Rated Power: 9.0HP (6.6KW)/3600 RPM
- Max Power: 9.5HP (7.0KW)/3600 RPM
- Working width: 1050-1400 (mm)
- Working depth: 100-300 (mm)
- Gear Shifting: 2 Forward, 1 Reverse
- Blades Type: 32 Pcs/(3+1) Group x 4PCS (Z041)
- Gearbox: cast-iron GEARBOX
- Transmission: Gear-Driven
- Transmission oil capacity: 1.65 L (transmission) / 1.1 L (engine)
- Wheel One pair of 400-8 wheels
- Attachments Two pcs Disc

DT900

DIESEL TILLER

CE EPA E-V



- Engine Model: 173FB
- Engine Type: Single Cylinder, 4-Stroke, Forced Air-Cooled **Diesel**
- Displacement: 211CC
- Bore x stroke: 70*55mm
- Fuel tank capacity: 4.0L
- Starting System: Recoil Start
- Rated Power:6.0HP (4.6KW)/3600
- Max Power6.5HP (5.2KW)/3600 RPM
- Working width:800-1000 (mm)
- Working depth:100-300 (mm)
- Gear Shifting:2 Forward , 1 Reverse
- Blades Type:32 Pcs/(3+1)Group×4PCS
- Gearbox:cast-iron GEARBOX
- Transmission: Gear-Driven
- Transmission oil capacity: 1.65L (transmission) / 1.1(engine)
- Wheel: One pair of 400-8 wheels
- Attachments :Two pcs Disc

DT1050D

DIESEL TILLER

CE EPA E-V



- Engine Model: 178F
- Engine Type: Single Cylinder, 4-Stroke, Forced Air-Cooled **Diesel**
- Displacement: 296CC
- Bore x stroke: 78*64mm
- Fuel tank capacity: 3.5L
- Starting System:Recoil Start(Hand Start)
- Rated Power:6.0HP (4.4KW)/3600 RPM
- Max Power6.5HP (4.8KW)/3600 RPM
- Working width:1050-1400 (mm)
- Working depth:100-300 (mm)
- Gear Shifting:2 Forward , 1 Reverse
- Blades Type:32 Pcs/(3+1)Group×4PCS
- Gearbox:cast-iron GEARBOX
- Transmission:Gear-Driven
- Transmission oil capacity1.65L (transmission) / 1.1 L (engine)
- Wheel:One pair of 400-8 wheels
- Attachments :Two pcs Disc

DT1350F

DIESEL TILLER

CE EPA E-V



- Engine Model: 186FA
- Engine Type: Single Cylinder, 4-Stroke, Forced Air-Cooled **Diesel**
- Displacement: 418CC
- Bore x stroke: 86*72mm
- Fuel tank capacity: 5.5L
- Starting System: Recoil Start(Hand Start)
- Rated Power:9.0HP (6.6KW)/3600 RPM
- Max Power10HP (7.4KW)/3600 RPM
- Working width:1050-1400 (mm)
- Working depth:100-300 (mm)
- Gear Shifting:2 Forward , 1 Reverse
- Blades Type:32 Pcs/(3+1)Group×4PCS
- Gearbox:cast-iron GEARBOX
- Transmission: Gear-Driven
- Transmission oil :capacity1.65L (transmission) / 1.1 L (engine)
- Wheel:One pair of 500-12 wheels
- AttachmentsTwo pcs Disc

GT650/GT650A

GASOLINE TILLER

CE EPA E-V



- Engine model: 170F-2-L/P(212cc)/177F-3/P(270cc)
- Max power hp: 7(5.1)/1800kw/rpm/ 9(6.5)/1800
- Body size: 1600×750×880mm
- Tilling scope: ditching width: 290 ~ 320 tilling width: 420 ~ 650
- Tilling depth: ≥100mm
- Gear shifting: walking Gearbox: forward(H, L), 0、reverse(H, L) Tilling Gearbox : high drive ratio (H, L) low drive ratio (H, L)
- Driving model: gear+belt
- Transmission oil capacity: walking gearbox: 1.5L Tilling Gearbox: 1.2L
- Accessories: 5pcs ditching blade, 3pcs×3 group rotary blade, 1 set of 30mm iron wheel, 1 set of 3.5-6 rubber tyre

GT85B

GASOLINE TILLER WITH TRAILER

CE EPA E-V



- Engine Model:170F
- Engine Type: OHV,25°Tilt,single cylinder, forced air cooling,4-stroke
- Displacement: 212CC
- Bore x stroke: 70x55mm
- Fuel tank capacity: 3.6L
- Starting System: Recoil Start(Hand Start)
- Rated Power: 7.0HP (5.0KW)/3600 RPM
- Max Power: 7.5HP (5.5KW)/3600 RPM
- Working width: 800 (mm)
- Working depth: 100-300 (mm)
- Gear Shifting: 2 Forward , 1 Reverse
- Blades Type: 24 Pcs/3 Group×4PCS
- Gearbox: Aluminum GEARBOX
- Transmission: BELT
- Transmission oil capacity: 1.65 L (transmission) / 0.6 L (engine)
- Wheel: One pair of 350-6 wheels

TL100



- Trailer

SP-01



- Adjustable plough

SP-02



- One side plough

SP-03



- Metal wheel 4.0-8

SP-04



- Turnover plow

SP-05



- Potato digger

SP-06



- Weed extractor

SP-07



- Lawn Mower

DT500Q

RIDE-ON DIESEL TILLER



- Engine Model:192F
- Engine Type:Single Cylinder, 4-Stroke, Forced Air-Cooled **Diesel**
- Displacement:499CC
- Bore x stroke:92*75mm
- Fuel tank capacity:5.5L
- Starting System:Electric Start
- Max Power:16HP/3600 RPM
- Working width:900-1350 (mm)
- Working depth:100-300 (mm)
- Gear Shifting:3 Forward , 1 Reverse
- Blades Type:32 Pcs/(3+1)Group×4PCS
- Gearbox:cast-iron GEARBOX
- Transmission:Gear-Driven
- Attachments:Front wheels 5.0-8, rear wheels 5.0-12; two iron wheels;

FT6.0

GASOLINE FIELD TRIMMER



- Engine: **RV175 (173.9CC, OHV) RATO**
- Max output: 5.5/3600HP/rpm
- Fuel Tank capacity: 1.0 L
- Cutting width: 560mm
- Cutting height: 42.8/61.8/101.3mm
- Output rotating speed: 3400rpm
- Trimmer head material: rion
- Throttle switch: Yes

LS380-GX200

GASOLINE LAWN SCARIFIER



- Engine Model: 168F
- Engine Type: "OHV,single cylinder, forced air cooling,4-stroke"
- Displacement: 196cc
- Rated Power: 6.5HP(3.8KW)
- Idling speed: 3600rpm
- Working Width: 380mm
- Adjustable working depth: -8mm ~ +12mm(8 positions)
- Wheel Size: 7" / 8"
- Catcher valume: 40L

GLM40T-C

GASOLINE LAWN MOWER



- Drive system: Hand Push
- Engine manufacturer: chinese engine
- Engine model: 1P52FA
- Engine power info (cc/kw/rpm): 79.8CC/1.5kw/3000rpm
- Fuel tank volume (l): 1.0L
- Oil volume (l): 0.45L
- Deck material: **plastic**
- Cutting width (mm/inches): 406mm/16"
- Cutting height adjustment: Individual height adjsutment: 3 positions
- Cutting height (mm): 25-65mm with 3 positions
- Wheel size (inches)(Front/rear): 6 inch (front)/6inch (rear)
- Function: rear discharge, Mulching
- Grass collector capacity (l): 45L

GLM46Z-D

GASOLINE LAWN MOWER



- Drive system: Self-propelled
- Engine manufacturer: chinese engine
- Engine model: 1P65FA
- Engine power info (cc/kw/rpm): 139CC/2.2KW/3000
- Fuel tank volume (l): 1.2L
- Oil volume (l): 0.6L
- Deck material: Steel
- Cutting width (mm/inches): 460mm/18"
- Cutting height adjustment: Central Height Adjustment: 5positions
- Cutting height (mm): 25-75mm with 5 positions
- Wheel size (inches)(Front/rear): 7 inch (front)/8 inch (rear)
- Function: rear discharge, Mulching
- Grass collector capacity (l): 55L
- Grass collector type nylon bag

GLM50SDC-LC139

GASOLINE LAWN MOWER



- Drive system: Hand Push
- Engine manufacturer: **LONCIN ENGINE**
- Engine model: 1P65FE
- engine power info: 139CC/2.4kw/3000rpm
- Fuel tank volume (L): 0.9L
- Oil volume (L): 0.5L
- Deck material: Steel
- Cutting width (mm/inches): 508mm/20"
- Cutting height adjustment: Central Height Adjustment: 5positions
- Cutting height (mm): 25-75mm with 5 positions
- wheel size (inches)(Front/rear): 7 inch (front)/7 inch (rear)
- Function: side-discharge, Mulching
- Grass collector capacity (l): /
- Grass collector type: /

GLM46ZP-LC139

GASOLINE LAWN MOWER

CE EPA E-V



- Drive system: Self-propelled
- Engine manufacturer: **LONCIN ENGINE**
- Engine model: LC1P65FE
- engine power info (cc/kw/rpm):
- 139CC/2.4kw/3000rpm
- Fuel tank volume (L): 0.9L
- Oil volume (L): 0.5L
- Deck mat: Steel
- Cutting width (mm/inches): 457mm/18"
- Cutting height adjustment: Central Height
- Adjustment: 8 positions
- Cutting height (mm): 25-75mm with 8 positions
- wheel size (inches)(Front/rear): 8 inch (front)/10inch (rear)
- Function: rear discharge, Side-discharge, Mulching
- Grass collector capacity (l): 60L
- Grass collector type: half plastic grass catcher

GLM51ZP-LC139

GASOLINE LAWN MOWER

CE EPA E-V



- Drive system: Self-propelled
- Engine manufacturer: **LONCIN ENGINE**
- Engine model: LC1P65FE
- engine power info (cc/kw/rpm):
- 139CC/2.4kw/3000rpm
- Fuel tank volume (L): 0.9L
- Oil volume (L): 0.5L
- Deck material: Steel
- Cutting width (mm/inches): 508mm/20"
- Cutting height adjustment: Central Height
- Adjustment: 8 positions
- Cutting height (mm): 25-75mm with 8 positions
- wheel size (inches)(Front/rear): 8 inch (front)/10inch (rear)
- Function: rear discharge, Side-discharge, Mulching
- Grass collector capacity (L): 60L
- Grass collector type: half plastic grass catcher

QG26

Riding Mower

CE



- Drive Type:Rear-wheel Drive
- Turning Radius (in.):18
- Frame:Steel tubing, welded and powder coated
- Assembled Length X Height XWidth (mm): 1820*750*1100
- **ENGINE**
- Displacement (cc):224cc
- Engine Model:LC 1P75F
- Starting System(Recoil/ES/Auto choke): Recoil/E-start
- Power MAX(kw):4.5KW
- Rated speed:2800 rpm
- **Driving System**
- Forward Speed (km/h):1.5/2.0/4.0/6.0Km/h
- Maximum Reverse Speed ((km/h):2.5Km/h
- Tires:4-ply tubeless
- Front Wheel Size (in.):10*400-4
- Rear Wheel Size (in.):13*500-6
- **Cutting System**
- Cutting Width:26"
- Number of Blades:1
- Blade speed(rpm):Max 2850
- Blade brake:Yes
- Catcher capacity(L):150L
- Cutting heights(mm):
- 35-75mm ±5mm with 5 grades
- Height adjustment:Manual
- Function:mulching, Side-discharge, rear discharge.
- **Other features**
- Battery voltage:20V
- Battery capacity:2Ah
- Charger voltage (v)
- and charging current (A):
- 21.8/0.6
- Charger time (h):4.7 hours
- Seat:Adjustable, integrated switch

GLM53Z-LC196

GASOLINE LAWN MOWER

CE EPA E-V



- Drive system: Self-propelled
- Engine manufacturer: **LONCIN ENGINE**
- Engine model: V200
- engine power info (cc/kw/rpm):
- 196CC/4.0kw/3000rpm
- Fuel tank volume (L): 1.0L
- Oil volume (L): 0.5L
- Deck material: Steel
- Cutting width (mm/inches): 533mm/21"
- Cutting height adjustment: Central Height
- Adjustment: 8 positions
- Cutting height (mm): 30-80mm with 8 positions
- wheel size (inches)(Front/rear): 7 inch (front)/10inch (rear)
- Function: rear discharge, Side-discharge, Mulching
- Grass collector capacity (L): 60L

RG670

REMOTE CONTROL MOWER

CE



- Engine type:**RATO four stroke single cylinder**
- Engine model:**RV340D**
- Bore x stroke88×56mm
- Displacement:340.6cc
- Rated power output:8.15kw/3600rpm
- Fuel tank capacity: 5L
- Engine oil tank capacity:1.1L
- Walk speed:0~5km/h
- Remote distance:≤200m
- Cutting width:670mm
- Cutting height20~140mm
- Slope climbing ability≤50°

SM11

GASOLINE STRAW CRUSHER MOWER

CE   EPA E-V

- Cutting Width: 400mm
- Engine Type: 170F,OHV 4-stroke
- Displacement: 212cc
- Maxoutput: 7.0HP/3600rpm
- Fuel Tank capacity: 3.6L
- Oil Capacity: 0.6L
- Fuel Type: unleaded gasoline



SM70

STRAW CRUSHER MOWER

  CE 



- Model Number:W300F-2 Petrol Engine
- Rated Power(Kw):5
- Max. Power(Kw):6.3
- Rated Speed (r/min) 3600
- Starting Mode Recoil Start
- Machine Size 1800×800×800mm
- Transmission Belt Drive
- Clutch mode Tension pulley
- Gear Shifting 3 forward, 1 reverse
- Stub Height (mm) 3mm ~8 mm
- Cutting width (mm) 700
- Working speed (m/s) 0.1 ~0.3
- Working efficiency (acre/hour) ≥0.66
- Fuel Consumption (kg/hm²) ≤35
- Tine Number (pcs) 36
- Walking Speed First Gear(Km/h) 0.98
- Second Gear(Km/h) 1.58
- Third Gear(Km/h) 2.56
- Reverse Gear(Km/h) 1.18

SM50B

STRAW CRUSHER MOWER

  CE 

- Engine manufacturer:DAJIANG ENGINE
- Engine Type: single cylinder,forced air cooling,4-stroke
- Displacement:224CC
- Rated Power:4.9KW
- Rated Speed:3600r/min
- Starting Mode:Recoil Start
- Fuel tank capacity:3.9L
- Gear Shifting:2 forward, 1 reverse
- Stubble Height:0.5cm ~4 cm
- Cutting width:500mm



SM01

GASOLINE SCYTHE MOWER

CE   EPA E-V



- Cutting width: 870mm
- Transmission: Belt and gear
- Cutting mode: Unidirectional
- Working speed: 2.5km/h
- Engine type: Vertical engine,Single cylinder, 4stroke,forced cooling,OHV
- Horse power: 5.0HP
- Displacement: 159cc
- Net power: 3KW
- Rated speed: 3600r/min
- Starting system: Recoil start
- Fuel: Unleaded gasoline
- Engine Oil: 15W-40

SM03

GASOLINE SCYTHE MOWER

CE   EPA E-V



- Cutting width: 870mm
- Transmission: Belt and gear
- Cutting mode: Unidirectional
- Working speed: 2.5km/h
- Engine type: Vertical engine,Single cylinder, 4stroke,forced cooling,OHV
- Horse power: 5.0HP
- Displacement: 173.3cc(RV170)
- Net power: 3.2KW
- Rated speed: 3600r/min
- Starting system: Recoil start
- Fuel: Unleaded gasoline

ST421

GASOLINE SNOW THROWER

CE   EPA E-V



ENGINE

- Displacement: 212cc
- Max. Power: 4.2KW/3600rpm
- Fuel tank capacity: 3.5L
- Oil tank capacity: 0.6L
- Start Mode: recoil start

TRANSMISSION SYSTEM

- Transmission Type: belt
- Speeds: self propelled by auger

DIMENSIONS

- Clearing width: 21inch / 530mm
- Intake height: 12inch / 300mm
- Throwing distance: ≤11m
- Type of Wheels: 7"

CHUTE&DEFLECTOR

- Deflector control: hand grip on deflector
- Deflector material: plastic
- Chute control: hand grip on chute
- Chute material: plastic

MT250A

DUMP TRUCK



- Machine Name: Mini Dumper
- Engine type: 1-Cylinder, 4-stroke, Air-cooled OHV carburetor gasoline engine
- Max Power: 6.5HP /3600 RPM
- Displacement: 196cm³
- Transmission: 3 forward / 1 reverse speed
- Wheels: Front 400×10, rear 400×8
- Capacity: 250KGS
- Dimensions: 155X75X100CM

MT300C

DUMP TRUCK



- Machine Name: Mini Dumper
- Engine type: 1-Cylinder, 4-stroke, Air-cooled OHV carburetor gasoline engine
- Max Power: 6.5HP /3600 RPM
- Displacement: 196cm³
- Transmission: 3 forward / 1 reverse speed
- Driven Type: Crawler driven
- Capacity: 300KGS
- Dimensions: 165X66X100CM

TA254-A6

WHEELED TRACTOR



- Engine Model: XY377-C
- Rated Power: 18.5KW/3000r/min
- specification: 2500*970*1840mm
- Ground clearance: 285mm
- Front wheel: 5.00-12
- Rear wheel: 8.00-16
- Wheel track: 770mm
- Wheelbase: 1320mm
- Turning radius: 1700mm

T4

GASOLINE OUTBOARD MOTOR



- N.W: S: 16 L: 17
- Full throttle operating range: 5000-6000
- Maximum output: 4HP
- Idea speed (in neutral): 1100-1200
- Engine type: 1
- Engine type: 86CC
- Bore x stroke: 47.0x43.0
- Control system: Tiller
- Starting System: Manual
- Gear position: Forward-neutral
- Gear ration: 2.08 (27/13)
- Trim and tilt system: Manual tilt
- Integral fuel tank capacity: 2
- Ignition system: CDI
- Gear oil capacity: 70
- Propeller options: 3-7 1/4x6

T9.8

GASOLINE OUTBOARD MOTOR



- N.W: S: 27.8 L: 29
- Full throttle operating range: 4000-5000
- Maximum output: 9.8HP
- Idea speed (in neutral): 900-1000
- Engine type: 2
- Engine type: 169CC
- Bore x stroke: 50.0x43.0
- Control system: Tiller
- Starting System: Manual
- Gear position: Forward-neutral-reverse
- Gear ration: 2.08 (27/13)
- Trim and tilt system: Manual tilt
- Integral fuel tank capacity: 12
- Ignition system: CDI
- Gear oil capacity: 160
- Propeller options: 8.9x8.5

T15

GASOLINE OUTBOARD MOTOR



- N.W: S: 36 L: 38
- Full throttle operating range: 4500-5500
- Maximum output: 15HP
- Idea speed (in neutral): 900-1000
- Engine type: 2
- Engine type: 246CC
- Bore x stroke: 56.0x50.0
- Control system: Tiller
- Starting System: Manual/Electric
- Gear position: Forward-neutral-reverse
- Gear ration: 2.08 (27/13)
- Trim and tilt system: Manual tilt
- Integral fuel tank capacity: 24
- Ignition system: CDI
- Gear oil capacity: 250
- Propeller options: 3-9 1/4x9

F6

GASOLINE OUTBOARD MOTOR



4-STROKE

- N.w:S:27 L:28
- Full throttle operating range: 4000-5000
- Maximum output: 6HP
- Idea speed (in neutral): 1400-1500
- Engine type: 1
- Engine type: 139
- Bore x stroke: 62.0*46.0
- Control system: Tiller
- Starting System: Manual
- Gear position: Forward-neutral-reverse
- Gear ration: 2.08 (27/13)
- Trim and tilt system: Manual tilt
- Integral fuel tank capacity: 2.1
- Ignition system: CDI
- Gear oil capacity: 100
- Propeller options: 3-7 1/4*7

F10

GASOLINE OUTBOARD MOTOR



4-STROKE

- N.w:S:40 L:41
- Full throttle operating range: 5000-6000
- Maximum output: 10HP
- Idea speed (in neutral): 900-1000
- Engine type: 2
- Engine type: 216
- Bore x stroke: 56.0*43.0
- Control system: Tiller
- Starting System: Manual
- Gear position: Forward-neutral-reverse
- Gear ration: 2.08 (27/13)
- Trim and tilt system: Manual tilt
- Integral fuel tank capacity: 12
- Ignition system: CDI
- Gear oil capacity: 160
- Propeller options: 3-9 1/4*8

F15

GASOLINE OUTBOARD MOTOR



4-STROKE

- N.w:S:47 L:49
- Full throttle operating range: 5000-6000
- Maximum output: 15HP
- Idea speed (in neutral): 900-1000
- Engine type: 2
- Engine type: 323
- Bore x stroke: 59.0*59.0
- Control system: Tiller
- Starting System: Manual/Electric
- Gear position: Forward-neutral-reverse
- Gear ration: 2.08 (27/13)
- Trim and tilt system: Manual tilt
- Integral fuel tank capacity: 24
- Ignition system: CDI
- Gear oil capacity: 250
- Propeller options: 3-9 1/4*9

T2.6BMS

GASOLINE OUTBOARD MOTOR

CE   
EPA E-V



- Overall length: 605(23.8)
- Overall width: 200(7.9)
- Overall height: 945(37.2) • Transom height: 10
- Full throttle operating range: 3800-5200
- Maximum output: 1.9(2.6)@5000
- Idea speed(in neutral): 1250-1350
- Engine type: 2 stroke
- Cylinders: 1 • Displacement: 50
- Bore x stroke: 42x36(1.65x1.42)
- Ignition system: CDI • Control system: Tiller
- Start system: Manual • Gear position: /
- Gear ration: 2.08(27/3)
- Trim and tilt system: Manual tilt
- Integral fuel tank capacity: 1.4
- Integral fuel tank capacity: /
- Maximum fuel waste: Fuel: oil ration: 50: 1
- Gear oil capacity: 45
- Propeller options: 3x7 1/4" x5"
- Net/Gross weight: 11/13
- Dimension: 96x42x28
- Capacity: 20/40/40HQ: 256/550/600

T3.5BMS

GASOLINE OUTBOARD MOTOR

CE   
EPA E-V



- Overall length: 620(24.4)
- Overall width: 220(8.6)
- Overall height: 960(37.8) • Transom height: 17
- Full throttle operating range: 4200-5300
- Maximum output: 2.5(3.5)@5000
- Idea speed(in neutral): 1250-1350
- Engine type: 2 stroke
- Cylinders: 1 • Displacement: 74.6
- Bore x stroke: 42x43(1.85x1.69)
- Ignition system: CDI • Control system: Tiller
- Start system: Manual
- Gear position: Forward-neutral
- Gear ration: 2.08(27/3)
- Trim and tilt system: Manual tilt
- Integral fuel tank capacity: 1.5
- Separate fuel tank capacity: /
- Maximum fuel waste: Fuel: oil ration: 50: 1
- Gear oil capacity: 45
- Propeller options: 3x7 1/4" x6"
- Net/Gross weight: 13/15
- Dimension: 96x42x28
- Capacity: 20/40/40HQ: 256/550/600

OB520-2

GASOLINE OUTBOARD MOTOR

CE   
EPA E-V



- Engine: 2 stroke single cylinder petrol engine
- Power: 2.3HP
- Displacement: 51.7cc
- Speed: 15km/h
- Fuel: petrol
- Gear position: 1 Forward & Netutral
- Gear ratio: 2.08

OB7.0

GASOLINE OUTBOARD MOTOR

CE   
EPA E-V



- Engine type: single cylinder,air-cooled,4 stroke
- Displacement: 196cc, 6.5HP
- Rated output power: 4.8kw/4000rpm
- Bore x stroke: 70MMx51mm
- Fuel tank capacity: 1.0L
- Oil tank capacity: 0.6L
- Starting system: Recoil start
- Gear Transmission Type: clutch

Electric Trolling Motors

CE   



	Mount	Control	Thrustin (LBS)	Thrustin (kgs)	Battery Required (Input Volt)	Output Power(w)	Suitable for person	Speeds	Traction (kgs)
OMS-32L			32LBS	14.5	12V	312	2		1050
OMS-36L			36LBS	16.3	12V	348	2-3		1150
OMS-40L			40LBS	18.1	12V	408	2-3		1250
OMS-46L	Lever Lock Bracket	Telescoping Hand & Tiller Twist	46LBS	20.9	12V	480	2-4		1350
OMS-50L			50LBS	22.7	12V	552	3-5	5-Speed Forward & 3-Speed Reverse	1450
OMS-55L			55LBS	25.0	12V	624	3-5		1650
OMS-60L			60LBS	27.0	12V	672	4-6		1850
OMS-86L					86LBS	39.1	24V	1152	6-8
TRM-120L	Brushless Motor		120LB	54.5	12V	660	4-6		1000
TRM-150L			150LB	68.2	24V	1400	6-8		2000

FIG2000IX

INVERTER GENERATOR
 CE  EPA E-V



- Type: Air-Cooled, 4-Stroke, OHV
- Displacement: 119 cc
- Ignition system: C.D.I
- start method: Recoil start
- Engine speed: 2800-3800 RPM
- Fuel tank capacity: 10 L
- Fuel: Unleaded gasoline
- Fuel consumption: 550g/kw.h
- Continuous operating hours(70% of rated load): 8 h
- Noise (7m away): 65 dba
- Rated output frequency: 50/60 HZ
- Rated A.C. Output: 110/120/230/240V
- D. C. Output: N
- **Rated power output(KVA): 1.8 KW**
- **Max. power output(KVA): 2.0 KW**
- LengthxWidthxHeight 455x385x435 mm
- Fuel gauge: Y
- Auto voltage adjustor: on board
- Low oil alert: Y
- Circuit protector: on board

FIG3500IG

INVERTER GENERATOR
 CE  EPA E-V



- Type: Air-Cooled, 4-Stroke, OHV
- Displacement: 212 cc
- Ignition system: C.D.I
- start method: Recoil start
- Engine speed: 2800-3800 RPM
- Fuel tank capacity: 13 L
- Fuel: Unleaded gasoline
- Fuel consumption: 450g/kw.h
- Continuous operating hours(70% of rated load): 8 h
- Noise (7m away): 68 dba
- Rated output frequency: 50/60 HZ
- Rated A.C. Output: 110/120/230/240 V
- D. C. Output: 12 V, 8.3 A
- **Rated power output(KVA): 3.2 KW**
- **Max. power output(KVA): 3.5 KW**
- Length*Width*Height: 520*440*470 mm
- Fuel gauge: Y
- Auto voltage adjustor: on board
- Low oil alert: Y
- Circuit protector: on board
- 2*USB socket: optional
- Parallel connection: optional
- Parallel connection: Brown Carton

FIG4500IG

INVERTER GENERATOR
 CE  EPA E-V



- Type: Air-Cooled, 4-Stroke, OHV
- Displacement: 223 cc
- Ignition system: C.D.I
- start method: Recoil start
- Engine speed: 2800-3800 RPM
- Fuel tank capacity: 13L
- Fuel: Unleaded gasoline
- Fuel consumption: 460g/kw.h
- Continuous operating hours(70% of rated load): 7h
- Noise (7m away): 69 dba
- **Rated output frequency: 50/60 HZ**
- **Rated A.C. Output: 110/120/230/240V**
- D. C. Output: 12 V, 8.3 A
- Rated power output(KVA): 3.8 KW
- Max. power output(KVA): 4.0 KW
- LengthxWidthxHeight 520x440x470 mm
- Fuel gauge: Y
- Auto voltage adjustor: on board
- Low oil alert: Y
- Circuit protector: on board

DIG2000DI/DIG2500DI

INVERTER GENERATOR
 CE  EURO-V



- Frequency (Hz) : 50/60Hz
- **Rated AC Output(KW): 1.6/2.0KW**
- **Max. AC Output(KW): 1.82/2KW**
- Rated AC Voltage (V) : 110/120/230/240 V
- Wiring type: copper
- Power Factor (cosφ): 1.0
- Engine Mode: 148FE/P/148FE/P-2
- Type: Forced Air-cooled, 4-storke,OHV
- Displacement(cc): 80cc/98cc
- Max. Output (KW/rpm): 1.8/5000KW/rpm2.2/5300KW/rpm
- Fuel: Unleaded Gasoline
- Fuel Tank Capacity (L) : 5.5L
- Continuous Operating Hours (h): 5/4(100% Load)/4(100% Load)
- Oil: SAE 10W-30 Above SJ Grade
- Ignition System : C.D.I
- Starting System: Recoil Starter
- Operating Noise Level (7m)dB : 69

DIG1800DI/DIG3200DI

INVERTER GENERATOR
 CE  EPA E-V



- Frequency (Hz) :50 / 60
- **Rated AC Output(KW): 1.8/3.2 KW**
- **Max. AC Output(KW): 2/3.5 KW**
- Rated AC Voltage (V) : 110/120/230/240 V
- Wiring type: copper
- Power Factor (cosφ) : 1
- Engine Mode: 148FE/P-4/165FE/P
- Type: Forced Air-cooled, 4-storke,OHV
- Displacement(cc): 79.7/151
- Max. Output (KW/rpm): 2.0/5000/3.5/5300
- Fuel: Unleaded Gasoline
- Fuel Tank Capacity (L) : 5.5
- Continuous Operating Hours (h): 5(100% Load)/2.6(100% Load)
- Oil: SAE 10W-30 Above SJ Grade
- Ignition System : C.D.I
- Starting System : Recoil Starter
- Operating Noise Level (7m)dB : 69

FG950C

GASOLINE GENERATOR
 CE  EPA E-V



- model: 1E45F
- Type: Single cylinder,4-stroke ,air-cooled
- Displacement: 63cc
- Max output power: 1.5HP/3600rpm
- Starting system: Recoil
- Fuel tank capacity: 4L
- Rated voltage: 230V
- Rated frequency: 50HZ
- **Rated Outpower: 0.65KW**
- **Max output power: 0.8KW**

FG1500-F

GASOLINE GENERATOR

CE EPA E-V



- model: 156F
- Type: Single cylinder, 4-stroke, air-cooled
- Displacement: 98cc
- Max output power: 2.5HP/3600rpm
- Starting system: Recoil
- Fuel tank capacity: 5L
- Oil capacity: 0.35L
- Rated voltage: 230V
- Rated frequency: 50HZ
- **Rated Outpower: 0.9KW**
- **Max output power: 1.0KW**

FG3500-F

GASOLINE GENERATOR

CE EPA E-V



- model: 170F
- Type: Single cylinder, 4-stroke, air-cooled
- Displacement: 212cc
- Max output power: 7.0HP/3600rpm
- Starting system: Recoil or electric
- Fuel tank capacity: 15L
- Oil capacity: 0.6L
- Rated voltage: 230V
- Rated frequency: 50HZ
- **Rated Outpower: 2.8KW**
- **Max output power: 3.0KW**

FG8000-F

GASOLINE GENERATOR

CE EPA E-V



- model: 190F
- Type: Single cylinder, 4-stroke, air-cooled
- Displacement: 420cc
- Max output power: 15HP/3600rpm
- Starting system: Recoil or electric
- Fuel tank capacity: 25L
- Oil capacity: 1.1L
- Rated voltage: 230V
- Rated frequency: 50HZ
- **Rated Outpower: 6.0KW**
- **Max output power: 6.5KW**

FBS3500

GASOLINE GENERATOR

CE EURO-V



- Generator Model: gasoline
- **Rated power output: 2.8KW**
- **Max power output: 3.0KW**
- Rated output voltage: 220V~
- Frequency: 50Hz
- Phase: single phase
- Engine: 170F • Alternator: 160x120mm
- Engine type: 1-cylinder, 4-stroke, Air-cooled
- Displacement: 212CC •
- Max output: 7HP/3600rpm
- Bore x Stroke: 70x54mm Ignition system: TCI
- Fuel tank capacity: 15L
- Fuel consumption: 395g/KW.H
- Continuous operating hour: 9 hours
- Oil capacity: 0,6L
- Noise (7 meters away) 95dB
- Copper wire, recoil start: yes

FBS6500

GASOLINE GENERATOR

CE EURO-V



- Generator Model: gasoline
- **Rated power output: 5.0KW**
- **Max power output: 5.5KW**
- Rated output voltage: 220V~
- Frequency: 50Hz
- Phase: single phase
- Engine: 190F • Alternator: 190x140mm
- Engine type: 1-cylinder, 4-stroke, Air-cooled
- Displacement: 420CC
- Max output: 13HP/3600rpm
- Bore x Stroke: 88x64mm • Ignition system: TCI
- Fuel tank capacity: 25L
- Fuel consumption: 374g/KW.H
- Continuous operating hour: 9 hours
- Oil capacity: 1,1L
- Noise (7 meters away) 97dB
- Copper wire, recoil start: yes

DG8000CLE

DIESEL GENERATOR

CE EPA E-V



- Engine Model 170F
- Type of Engine 1-Cylinder, 4-stroke, Air-cooled **diesel engine**
- **Rated Output(kW): 6.5kW**
- **Max Output(kW): 7.0kW**
- Voltage/Frequency: 115/230V/60Hz
- Rated rotation speed 3600 rpm
- Engine type: 192FBE
- Cylinder capacity: 498cc
- Bore*stroke: 92*75mm
- Starting System: Electric start
- Tank capacity: 13L

DG6800

SILENT DIESEL GENERATOR
 CE   EURO-V



- Engine model: SH195F/E,4-stroke,air-cooled single cylinder, **diesel engine**
- Displacement: 532cc
- Rated Voltage: 230V
- Rated Frequency: 50Hz
- **Rated Output Power: 6.5KW**
- **Max Output Power: 6.8KW**
- Rated rotation speed: 3000 rpm
- Fuel tank capacity: 17L
- Power Factor (cosφ) : 0.8
- Starting system: Electric Start
- Wheel: with 4x3"
- Battery: with battery

DG11000

SILENT DIESEL GENERATOR
 CE   EURO-V



- Engine model: CD292F,4-stroke,air-cooled single cylinder, **diesel engine**
- Displacement: 997cc
- Rated Voltage: 230V
- Rated Frequency: 50Hz
- **Rated Output Power: 10KW**
- **Max Output Power: 11KW**
- Rated rotation speed: 3000 rpm
- Fuel tank capacity: 26L
- Power Factor (cosφ) : 0.8
- Starting system: Electric Start
- Wheel: with 4x4"
- Battery: with battery

DG9000CLE

DIESEL GENERATOR
 CE   EPA E-V



- Engine Model170F
- Type of Engine1-Cylinder, 4-stroke, Air-cooled **diesel engine**
- **Rated.Output(kW):7.0kW**
- **Max Output(kW):7.5kW**
- Voltage/Frequency:115/230V/60Hz
- Rated rotation speed3600 rpm
- Engine type:195FE
- Cylinder capacity:531cc
- Bore*stroke:95*75mm
- Starting System:Electric start
- Tank capacity:13L

DG9000LDE

SILENT DIESEL GENERATOR
 CE   EPA E-V



- Engine Model170F
- Type of Engine1-Cylinder, 4-stroke, Air-cooled **diesel engine**
- **Rated.Output(kW):7.0kW**
- **Max Output(kW):7.5kW**
- Voltage/Frequency:115/230V/60Hz
- Rated rotation speed3600 rpm
- Engine type:195FE
- Cylinder capacity:531cc
- Bore*stroke:95*75mm
- Starting System:Electric start
- Tank capacity:17L

DG6000

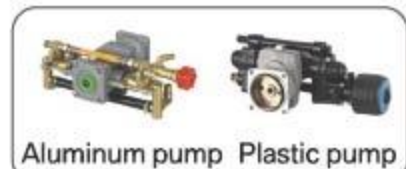
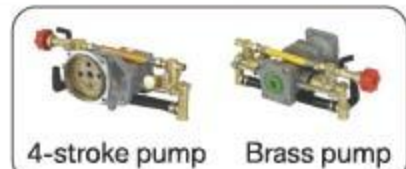
SILENT DIESEL GENERATOR
 CE   EURO-V



- Engine model: SH190F/E,4-stroke,ai-cooled single cylinder, **diesel engine**
- Displacement: 477cc
- Rated Voltage: 230V
- Rated Frequency: 50Hz
- **Rated Output Power: 5.5KW**
- **Max Output Power: 5.8KW**
- Rated rotation speed: 3000 rpm
- Fuel tank capacity: 17L
- Power Factor (cosφ) : 0.8
- Starting system: Electric Start
- Wheel: with 4x4"
- Battery: with battery

PS768

PORTABLE GASOLINE SPRAYER
 CE   EPA E-V



- Out put: 8L/min
- Working pressure: 15-25kg/cm²
- Engine model: 1: 25
- Power of engine: 1.2HP
- Discharging volume: 25.6cc
- Net weight: 8kgs
- Measure: 33x33x33cm

PS768B

PORTABLE GASOLINE SPRAYER

CE EPA E-V



- Engine type: Air cooled, FOUR stroke single cylinder
- Displacement: 35cc(140F)
- Rated power output: 1.2HP
- Out Power: 8L/Min
- Working pressure: 15-25kg/cm2

WP411

GASOLINE WATER PUMP

CE EPA E-V



- Engine: 1E40F-6
- Displacement: 40.2cc
- Max output: 1.4kw/6000rpm
- Inlet/Output diameter: 25mm/35mm
- Max.Head: 25m
- Max.Suction: 6m
- Fuel tank capacity: 0.85L

WP430A/WP520A

GASOLINE WATER PUMP

CE EPA E-V



- Matched Engine: 1E40F-TB/1E44F-5
- Displacement: 42.7CC/51.7CC
- Power(rpm): 125KW/7500rpm/1.47kw/7500rpm
- Fuel tank capacity: 1.2L
- Suction Length: 8m
- Lift: 30m/35m
- Flow: 8m³/h/15m³
- Water Outlet Diameter: 1" /1.5"

WP35X

GASOLINE WATER PUMP

CE EPA E-V



- Matchtec Engine: GX35(copy Honda)
- Displacement: 35.8cc
- Suction length: 7m
- Lift: 20m • Flow: 6m³/h
- Water outlet diameter: 25/35mm
- Stipulation suction tome: ≤80s
- Net weight: 8.5kg • Gross weight: 9.5kg
- Packing measurement: 340x30x39cm

WP15

GASOLINE WATER PUMP

CE EPA E-V



- Suck grade: 6 • Lift: 20m
- Volume of flow: 7m³/h
- Diameter of in&out pipe: 38mm/1.5inch
- Engine model: 152F
- Type: 4 stroke/single cylinder/air cooling
- Displacement: 98cc • Max output: 1.8kw/2.5HP
- Ignition mode: Transistorized magneto
- Starting mode: Recoil start
- Fuel tank capacity: 14L/0.37gal.
- Continous working time: 2h
- Net weight: 12kg/27lb • Nise level(7m): 65dB
- Dimension: 38x31x42cm
- Container capacite: 525pcs/20" 1085pcs/40" 1302pcs/40HQ

WP20X/WP30X

GASOLINE WATER PUMP

CE EPA E-V



- Engine: 4-stroke 163cc
- Engine type: 5.5hp/4000rpm/6.5hp/4000rpm
- Fuel tank capacity: 4L
- Continuous operating time: 5houers
- Engine oil system capacity: 0.6L
- PUMP: Single-step centrifugal/Water pump
- Diameter of outlet: 2 inch/3 inch
- Max.delivery lift: 23m/31m
- Suction height: 8m
- Max.water displacement: 30m³/hr/60m³/hr

CS170/CS180

GASOLINE HIGH PRESSURE WASHER

CE EPA E-V



- Max pressure: 150bar/2200psi/180bar/2500psi
- Flow rate: 9 L/min
- Power: 6.5HP 5.0kw/3600rpm
- Engine type: "Single cylinder,4-stroke, Air-cooled gasoline motor"
- Engine model: 168F
- Displacement: 163 cc
- Fuel tank volume: 3.6 L

CS170L/CS180L

GASOLINE HIGH PRESSURE WASHER

CE EPA E-V



- Max pressure: 150bar/2200psi/180bar/2600psi
- Flow rate: 9 L/min
- Power: 6.5HP 4.6kw/3600rpm 7.0HP 5.0kw/3600rpm
- Engine type: "Single cylinder,4-stroke, Air-cooled gasoline motor"
- Engine model: 168F/170F
- Displacement: 196cc/210cc
- Fuel tank volume: 3.6 L

CS200/CS250

GASOLINE HIGH PRESSURE WASHER

CE EPA E-V



- Max pressure: 200bar/2900psi,250bar/3600psi
- Flow rate: 13 L/min,18L/min
- Power: 9 HP 6.6kw/13 HP 9.5kw
- Engine type: Single cylinder,4-stroke, Air-cooled gasoline motor
- Engine model: 177F/190F
- Displacement: 270CC/420CC
- Fuel tank volume: 6L/6.5 L
- Consumption of fuel: 0.40L/h
- Accessory: 1pc spray Gun,10meter hose

SZ76

GASOLINE CHIPPER SHREDDER

CE  
EPA E-V



- Chipping Capacity: 76mm(3")
- Displacement: 208cc
- Engine: 7.0HP, 4-stroke air cooled
- No load speed: 3600r/min
- Starting System: Recoil
- Fuel Volume: 3.6L
- Oil Volume: 0.6L
- Fuel Type: Unleaded Gasoline
- Wheel size: 10" Pneumatic tire

SZ13

GASOLINE CHIPPER SHREDDER

CE  
EPA E-V



- Engine: 188F
- Displacement: 389cc
- Engine: 13HP, 4-stroke air cooled
- No load speed: 3600r/min
- Start mode: Recoil
- Output power: 7.7kw
- Tank capacity: 6.5L
- Max. cutting capacity: 4" x 2"
- N.W./G.W.: 100kgs/110kgs
- Means: 76x56x115cm

SZ7.0B

GASOLINE CHIPPER SHREDDER

CE  
EPA E-V



- Chipping Capacity: 50mm
- Blade Speed: 2700rpm
- Engine Type: OHV 4-stroke
- Starting System: Recoil
- Displacement: 212cc • Max. output: 7.0HP
- Engine Speed: 3600rpm
- Fuel Volume: 3.6L • Oil Volume: 0.6L
- Fuel Type: Unleaded Gasoline

SZ7.0G

GASOLINE CHIPPER SHREDDER

CE  
EPA E-V



- Chipping Capacity: 50mm
- Blade Speed: 2400rpm
- Engine Type: OHV 4-stroke
- Starting System: Recoil
- Displacement: 212cc • Max. output: 7.0HP
- Engine Speed: 3600rpm
- Fuel Volume: 3.6L • Oil Volume: 0.6L
- Fuel Type: Unleaded Gasoline
- Wheel size: 10" Pneumatic tire
- 2 pcs HSS chipping knives

SZ7.0

GASOLINE CHIPPER SHREDDER

CE  
EPA E-V



- Chipping Capacity: 50mm
- Blade Speed: 2700rpm
- Engine Type: OHV 4-stroke
- Starting System: Recoil
- Displacement: 212cc
- Max. output: 7.0HP
- Engine Speed: 3600rpm
- Fuel Volume: 3.6L
- Oil Volume: 0.6L
- Fuel Type: Unleaded Gasoline

SZ13B

GASOLINE CHIPPER SHREDDER

CE  
EPA E-V



- Chipping Capacity: 102mm(4")
- Displacement: 420cc
- Engine: 15HP, 4-stroke air cooled
- No load speed: 3600r/min
- Starting System: Recoil
- Fuel Volume: 6.5L
- Oil Volume: 1.1L
- Fuel Type: Unleaded Gasoline

SZ7.0H

GASOLINE CHIPPER SHREDDER

CE  
EPA E-V



- Chipping Capacity: 70mm
- Blade Speed: 2400rpm
- Engine Type: OHV 4-stroke
- Starting System: Recoil
- Displacement: 212cc
- Max. output: 7.0HP
- Engine Speed: 3600rpm
- Fuel Volume: 3.6L
- Oil Volume: 0.6L
- Fuel Type: Unleaded Gasoline
- Wheel size: 10" Pneumatic tire
- 2 pcs HSS chipping knives

SZ15H

GASOLINE CHIPPER SHREDDER

CE  
EPA E-V



- Chipping Capacity: 100mm
- Blade Speed: 2400rpm
- Engine Type: OHV 4-stroke
- Starting System: Recoil
- Displacement: 420cc
- Max. output: 15HP
- Engine Speed: 3600rpm
- Fuel Volume: 3.6L
- Oil Volume: 0.6L
- Fuel Type: Unleaded Gasoline
- Wheel size: 13" Pneumatic tire
- 3 pcs HSS chipping knives

HPLS-12T

GASOLINE LOG SPLITTER

CE  
EPA E-V



- Work force: 12 ton
- 7HP, Gasoline 4 Stroke
- Cutting capacity: Dia. 203mm
- Max Length: 508cm
- Cylinder dia: 3inch
- Travel time: 18S
- Control handle: one & double

TR450

GASOLINE TRENCHER

CE EPA E-V



- Product name: Trencher
- Engine: 212CC/ 7HP
- Fuel tank capacity: 4.1L • Start: Manual
- Trench capacity: 60m/h
- Blade: 21 carbide alloy blades
- Chain length: 1600mm
- Chain speed: 550m/min
- Trench width: 100mm
- Trench depth: 150,250,340,450mm
- Product Size: 1560x700x800mm

TR600

GASOLINE TRENCHER

CE EPA E-V



- Product name: Trencher
- Engine: 420CC/15HP
- Fuel tank capacity: 7.2L • Start: Manual
- Trench capacity: 60m/h
- Blade: 27 carbide alloy blades
- Chain length: 2060mm
- Chain speed: 550m/min
- Trench width: 100mm
- Trench depth: 200,400,600mm
- Product Size: 1600x750x800mm

VHLS-22T

GASOLINE LOG SPLITTER

CE EPA E-V



- Work force: 22 ton
- 7HP, Gasoline 4 Stroke
- Cutting capacity: Dia.500mm
- Max Length: 650mm
- Travel time: 11S
- Cylinder inner: 100mm dia (4inch)
- Control handle: one & double
- Wheel size: 15' Pneumatic tire
- Oil tank capacity: 20L

PS22C/PS30C

PUMP PLUNGER

CE EPA E-V



- Working pressure: 10-40pa
- Plunger No.xdia: 3x22mm/3x30mm
- Stroke: 16mm/20mm
- Rotation capacity: 800-1000rpm
- Require power: 1.5-2.2KW/3-5KW
- Output: 14-22L/min/30-40L/min

PS25HD-2

AGRICULTURAL SPRAYER

CE EPA E-V



- Plunger No.xdia:3x22mm
- Stroke: 16mm
- Rotation capacity: 800-1200rpm
- Suction volume: 14-25L/min
- Working pressure: 2.5-4.0Mpa
- Model: 168F
- Type of Engine: 1-Cylinder, 4-stroke, Air-cooled OHV gasoline engine
- Maximum power output: 6.5HP
- Displacement : 196cc
- Ignition System: T.C.I
- Starting System: recoil

PS09A

AGRICULTURAL SPRAYER

CE EPA E-V



- Plunger No.xdia: 3x9mm
- Plunger dia: 25mm
- Rotation capacity: 1500-1800rpm
- Suction volume: 22-27L/min
- Working pressure: 10-50 Bar
- Model: 168F
- Type of Engine: 1-Cylinder, 4-stroke, Air-cooled OHV gasoline engine
- Maximum power output: 6.5HP
- Displacement : 196cc
- Ignition System: T.C.I
- Starting System: recoil

PS09B

TROLLEY SPRAYER

CE EPA E-V



- Plunger No.xdia: 3x9mm
- Plunger dia: 25mm
- Rotation capacity: 1500-1800rpm
- Suction volume: 22-27L/min
- Working pressure: 10-50 Bar
- Model: 168F
- Type of Engine: 1-Cylinder, 4-stroke, Air-cooled OHV gasoline engine
- Maximum power output: 6.5HP
- Displacement : 196cc
- Ignition System: T.C.I
- Starting System: recoil

PS09D

TROLLEY SPRAYER

CE EPA E-V



- Plunger No.xdia: 3x9mm
- Plunger dia: 25mm
- Rotation capacity: 1500-1800rpm
- Suction volume: 22-27L/min
- Working pressure: 10-50 Bar
- Model: 168F
- Type of Engine: 1-Cylinder, 4-stroke, Air-cooled OHV gasoline engine
- Maximum power output: 6.5HP
- Displacement : 196cc
- Ignition System: T.C.I
- Starting System: recoil

PS22D

TROLLEY SPRAYER

CE EPA E-V



- Plunger No.xdia: 3x22mm
- Stroke: 16mm
- Rotation capacity: 800-1200rpm
- Suction volume: 14-22L/min
- Working pressure: 1.0-4.0Mpa
- Model: 170F
- Type of Engine: 1-Cylinder, 4-stroke, Air-cooled OHV gasoline engine
- Maximum power output: 7.5HP
- Displacement : 215cc
- Ignition System: T.C.I
- Starting System: recoil

PS30D

TROLLEY SPRAYER

CE  
EPA E-V



- Plunger No.×dia: 3×30mm
- Stroke: 20mm
- Rotation capacity: 800-1000rpm
- Suction volume: 30-40L/min
- Working pressure: 1.0-4.0Mpa
- Model: 170F
- Type of Engine: 1-Cylinder, 4-stroke, Air-cooled OHV gasoline engine
- Maximum power output: 7.5HP
- Displacement : 215cc
- Ignition System: T.C.I
- Starting System: recoil

PS22L

TROLLEY SPRAYER

CE  
EPA E-V



- Plunger No.×dia: 3×22mm
- Stroke: 16mm
- Rotation capacity: 800-1200rpm
- Suction volume: 14-22L/min
- Working pressure: 1.0-4.0Mpa
- Model: 170F
- Type of Engine: 1-Cylinder, 4-stroke, Air-cooled OHV gasoline engine
- Maximum power output: 7.5HP
- Displacement : 215cc
- Ignition System: T.C.I
- Starting System: recoil

PS30L

TROLLEY SPRAYER

CE  
EPA E-V



- Plunger No.×dia: 3×30mm
- Stroke: 20mm
- Rotation capacity: 800-1000rpm
- Suction volume: 30-40L/min
- Working pressure: 1.0-4.0Mpa
- Model: 170F
- Type of Engine: 1-Cylinder, 4-stroke, Air-cooled OHV gasoline engine
- Maximum power output: 7.5HP
- Displacement : 215cc
- Ignition System T.C.I
- Starting System recoil

AS-900

GASOLINE SPRAYER

CE  
EPA E-V



- Engine Model: TU-26
- Displacement: 25.6cc
- Power(rpm)1.2HP/7000
- Tank capacity: 25L
- output: 3-8L/min
- Working pressure: 1.5-2.5Mpa

AS-4025

GASOLINE SPRAYER

CE  
EPA E-V



- Tank capacity: 25L
- Out Power: 3-8L/Min
- Working pressure: 15-25kg/cm²
- Engine model: GX35
- Engine type: 35cc, 4-stroke air cooled, single cylinder
- power of engine: 1.2HP

3WF-2.6

MIST DUST & SPRAYER

CE  
EPA E-V



- Engine Model: 1E40FP-3Z
- Displacement: 41.5cc
- Power(rpm)1.63KW/6000
- Tank capacity: 14L/20L/26L
- Range(m): ≥12M
- Method of Starting: Recoil Starting

TS580

CUT OFF SAW

CE  
EPA E-V



- Engine type: Air cooled, two stroke single cylinder
- Displacement: 58cc
- Rated power output: 2.4KW
- Idling speed: 2800-3200rpm
- Fuel tank capacity 550ml
- Max wheel size: 300mm/12"
- Max cutting depth: 105mm
- 1pc blade, 1pc water pipe, tool kits

TS936

GASOLINE CONCRETE CUTTING MACHINE



- Engine type: Air cooled, two stroke single cylinder
- Displacement: 93.6cc
- Rated power output: 4.8KW
- Blade diameter: 350mm
- Max cutting depth: 125mm

TS1188

GASOLINE CONCRETE CUTTING MACHINE



- Engine type: Air cooled, two stroke single cylinder
- Displacement: 118.8cc
- Rated power output: 5.8KW
- Blade diameter: 400mm
- Max cutting depth: 145mm

GHD004

GASOLINE DEMOLITION HAMMER

CE EPA E-V



- Type of Engine: 1-Cylinder (44*34mm) , 2-stroke, Air-cooled OHV carburetor gasoline engine
- Displacement :52CC
- Max. power and speed: 1900W/6500r/min
- Max torque and speed: 3.5N.m/5000r/min
- Fuel consumption rate: 0.6L/h
- Impact frequency: 1500BPM
- Impact energy: 20-55J
- Fuel capacity: 1.3L
- Starting System: Hand pull start
- Hex. Point Chisel: 30*400mm 1pc
- Hex. Flat Chisel: 30x400mm 1pc

GPD-65

GASOLINE PILE DRIVER

CE EPA E-V



- Engine Type: 36x32mm, Single cylinder, air cooling, 2 stroke
- Displacement: 33cc
- Fuel: mixed oil (25 gasoline: 1 motor oil)
- Fuel Tank Capacity: 0.9L
- Max power and speed: 1000W/7000r/min
- Max torque and speed: 1.45N.M/5300r/min
- Fuel Consumption Rate: ≤0.5L/h
- Impact frequency: 3100BPM
- Impact energy: 30j
- Two Socket Sleeves: 45mm, 55mm, 88mm

GHD009

Gasoline Hammer&Drill



- Type of Engine: Air cooled, two stroke single cylinder
- Displacement :32.6CC
- Max. power and speed: 1000W/7000r/min
- Max torque and speed: 1.45N.m/5300r/min
- Fuel consumption rate: 0.5L/h
- Max. drill speed: 450rpm
- Impact frequency: 800-2800BPM
- Impact energy: 25-45J
- Fuel capacity: 0.9L
- Starting System: Hand pull start

PT-100

POWER TROWEL

CE EPA E-V



- Engine power: 196CC/6.5HP
- Driving speed: 50-100RPM
- working diameter: 914mm
- Blades: 4pcs
- Round Pan : 1pcs

TPR80

TAMPING RAMMER

CE EPA E-V



- Engine type: chinese engine
- Engine power: 5.5HP
- Bounding Height: 40-65mm
- Advancing Speed: 10-13 m/min
- Impact Force : 13kN
- Impact Frequency : 450-650times/min
- Plate Size: 30x31cm

Q300

CONCRETE SAW

CE EPA E-V



- Engine power: 196CC/6.5HP
- Fuel tank capacity: 3.6L
- Cutting depth: 50-80mm
- Width of cutting slot: 2-6mm
- Cutting speed: 1-3m/min
- Blade size: 300-350mm
- Water tank capacity: 15L

Q400

CONCRETE SAW

CE EPA E-V



- Engine power: 420CC/13HP
- Cutting depth: 180mm
- Width of cutting slot: 2-6mm
- Cutting speed: 1-3m/min
- Blade size: 400-500mm
- Water tank: 30L

C-80W

PLATE COMPACTOR



- Engine manufacturer: LONCIN ENGINE
- Engine power: 196CC/6.5HP
- Advancing Speed: 20-25 m/min
- Centrifugal Force : 13kN
- Compaction Depth : 25cm
- Plate Size: 53*40cm
- Climb Ability: 0-30%
- Water tank: 15L

C-90

PLATE COMPACTOR

CE EPA E-V



- Engine power: 196CC/6.5HP
- Advancing Speed: 20-25 m/min
- Centrifugal Force : 15kN
- Compaction Depth : 25cm
- Plate Size: 53x50cm
- Climb Ability: 0-30%



CDPS038-25

ELECTRONIC PRUNING SHEAR(BRUSHLESS MOTOR)



Makita type

- LITHIUM BATTERY VOLTAGE:DC20V 1.5Ah
- MAX POWER: 350W BRUSHLESS MOTOR
- MOTOR SPEED:23000/min
- WEIGHT OF SCISSORS:1.2KG
- MAX CUTTING CAPACITY:**25MM/30MM**
- WITH LCD DISPLAY
- OPERATING TIME: 2-3 HOURS(ONE BATTERY)
- CHARGE TIME:1.5-2HOURS
- BMC PACKING

CDPS036-A

ELECTRONIC PRUNING SHEAR (BRUSHLESS MOTOR)



Makita type

- LITHIUM BATTERY
- VOLTAGE:DC20V 2.0Ah
- MAX POWER:1050W
- RATED CURRENT:15.0A
- MOTOR SPEED:23000/min
- WEIGHT OF SCISSORS:1.0KG
- MAX CUTTING CAPACITY:**30MM**
- OPERATING TIME: 2-3 HOURS(ONE BATTERY)
- CHARGE TIME:1.5-2HOURS
- MATERIAL OF BLADE: SK5(IMPORTED FROM JAPAN)



CDPS037

ELECTRONIC PRUNING SHEAR (BRUSHLESS MOTOR)



Makita type

- Lithium Battery Voltage:DC20v
- Motor Speed:23000/min
- Weight Of Scissors:990g(Without Battery)
- Max Cutting Capacity:**40mm**
- Operating Time: 2-3 Hours(One Battery)
- Charge Time:1.5-2hours
- Material Of Blade:sk5 (With Teflon Coated)
- With Lcd Display For Battery And Cutting Indication
- BMC Packing



CDPS019-40MM

ELECTRONIC PRUNING SHEAR (BRUSHLESS MOTOR)



Makita type

- BATTERY VOLTAGE: DC20V
- MAX POWER: 450W BRUSHLESS MOTOR
- RATED CURRENT:15.0A
- MOTOR SPEED:23000/min
- WEIGHT OF SCISSORS:960g
- WEIGHT OF BATTERY(2Ah):360g
- WEIGHT OF BATTERY(4Ah):570g
- MAX CUTTING CAPACITY:**30/40MM**
- OPERATING TIME: 2-3 HOURS(ONE BATTERY)
- MATERIAL OF BLADE: SK5(IMPORTED FROM JAPAN)
- WITH FINGER PROTECT AND PROGRESSIVE FUNCTION
- WITH LCD DISPLAY



CDPS041-40

ELECTRONIC PRUNING SHEAR (BRUSHLESS MOTOR)



Makita type

- BATTERY VOLTAGE:DC21V
- RATED POWER:150W
- 3130# BRUSHLESS MOTOR
- MOTOR SPEED:23000/min
- WEIGHT OF SCISSORS:0.9KG
- MAX CUTTING CAPACITY:**40MM**
- MATERIAL OF BLADE:SK5
- BMC PACKING



CDPS043

ELECTRONIC PRUNING SHEAR (BRUSHLESS MOTOR)



Makita type

- BATTERY VOLTAGE:DC21V
- RATED POWER:180W
- 3163# BRUSHLESS MOTOR
- MOTOR SPEED:22000/min
- WEIGHT OF SCISSORS:0.9KG
- MAX CUTTING CAPACITY:**40MM**
- MATERIAL OF BLADE:SK5
- BMC PACKING



CDGS017-C

CORDLESS CHAIN SAW



- Battery Voltage:20v 1.5Ah
- No-load Speed:1700/min
- Chain Speed:6.5m/s
- Max. Cutting Length:150mm
- Bar Length:6"

CDGS023

CORDLESS CHAIN SAW (BRUSHLESS MOTOR)



- Battery Voltage:20v 2.0Ah
- No-load Speed:1700/min
- Chain Speed:6.5m/s
- Bar Length:6"
- Max. Cutting Length:150mm
- With Lubricate Bottle

CDGS018-D

CORDLESS CHAIN SAW (BRUSHLESS MOTOR)



- Battery Voltage:20v 4.0Ah
- Motor Rated Power:600w
- No-load Speed:3500/min
- Chain Speed:12m/s
- Bar Length:6"
- Chain Specification:1/4"
- Max. Cutting Length: 150mm
- Auto Lubricate:yes
- Running Time:2-3 Hours
(4Ah With Full Charge,no Load)
- With Lcd Display

CDGS021

CORDLESS CHAIN SAW



- Battery Voltage:20v 2Ah
- Motor Rated Power:250w(755# Motor)
- Motor Speed:6000/min
- Chain Speed: 0-8m/s
- Bar Length:4" Bar And Chain
- Max. Cutting Length: 100mm
- With Automatic Pump Oil

CDGS023-C

CORDLESS CHAIN SAW (BRUSHLESS MOTOR 3820#)



- BATTERY VOLTAGE:21V 2.0Ah
- RATED POWER:600W
- NO-LOAD SPEED:5500/min
- CHAIN SPEED:5.5M/S
- BAR LENGTH:6"
- MAX. CUTTING LENGTH:150mm
- RUNNING TIME:90MIN
(4Ah WITHOUT LOADING)
- WITH LUBRICATE SYSTEM
- WITH TWO BATTERIES
- WITH 1PC EXTRA CHAIN
- BMC PACKING

CDGS015

CORDLESS CHAIN SAW



- BATTERY VOLTAGE:20V
- NO-LOAD SPEED:3300/min
- NO-LOAD CHAIN SPEED:6M/S
- BAR LENGTH:8"/10" BAR AND CHAIN
- OIL CAPACITY:170ML
- AUTO LUBRICATE:YES
- QUICKLY FASTEN SYSTEM
- MECHANICAL CHAIN BRAKE
- WITH OIL LEVEL WINDOW AND
- WORKING INDICATOR LIGHT
- NET WEIGHT:3.2Kg(WITHOUT BATTERY)
- COLOR BOX PACKING

CDGS038

CORDLESS CHAIN SAW(4820# BRUSHLESS MOTOR)



- BATTERY VOLTAGE:20V
- CHAIN SPEED:8M/S
- BAR LENGTH:8" BAR AND CHAIN
- MAX. CUTTING LENGTH: 190mm
- WITH LUBRICATE SYSTEM
- WITH OIL LEVEL WINDOW
- WITH SDS(QUICK REPLACE BLADE FUNCTION)
- NET WEIGHT:1380g(WITHOUT BATTERY)
- COLOR BOX PACKING

CDGS016

CORDLESS CHAIN SAW BRUSHLESS MOTOR



- Battery Voltage:20V
- No-load Speed:5000/min
- No-load Chain Speed:10m/s
- Bar Length:8"/10" Bar And Chain
- Oil Capacity:100ml • Auto Lubricate:yes
- Quickly Fasten System
- Mechanical Chain Brake
- With Oil Level Window
- Net Weight:2kg(Without Battery)
- Color Box Packing

CDGS035-D

CORDLESS CHAIN SAW (BRUSHLESS MOTOR 5025#)



- BATTERY VOLTAGE:20V
- MAX. POWER:800W
- NO-LOAD SPEED:5000/min
- BAR LENGTH:12" BAR AND CHAIN
- CHAIN SPECIFICATION:1/4"
- AUTO LUBRICATE:YES
- WITH BREAK
- WITH SDS
- COLOR BOX PACKING

CDGS026

**CORDLESS CHAIN SAW
(BRUSHLESS MOTOR)**



- Battery Voltage:20V
- Roted Speed:6800/min & 8500/min
- Chain Speed:8.5m/s & 11m/s
- Bar Length:5" Bar And Chain
- Max. Cutting Length: 100mm
- Oil Tank:40ml
- With Automatic Pump Oil
- With Oil Level Window

CDPC008

CORDLESS POLE CHAIN SAW



- Battery Voltage:20V
- Rated Power:800w(Brushless Motor 3526 # External Rotor)
- Chain Speed:8m/s
- Bar Length:8
- Effective Cutting Diameter:200mm
- Chain:1/4
- Total Length:1.8m-2.6m
- Auto Lubrication Oil Pump
- Color Box Packing

CDGT015

CORDLESS GRASS TRIMMER



- BATTERY VOLTAGE:DC20V
- NO-LOAD SPEED:8500/min
- CUTTING WIDTH:260MM
- TELESCOPIC GUIDE RAIL APPROX. 930-1200MM
- 4 STEPS ADJUSTABLE MOTOR HEAD
- MOTOR HEAD ROTATABLE UP TO MAX. 180 °
- 2 KNIVES IN OPERATION
- COLOR BOX PACKING

CDGS018-A

**CORDLESS CHAIN SAW
(BRUSHLESS MOTOR)**



- Battery Voltage:20v
- Motor Rated Power:350w
- No-load Speed:3500/min
- Chain Speed:0-18m/s • Bar Length:8"
- Chain Specification:1/4"
- Max. Cutting Length:200mm
- Auto Lubricate:yes
- Running Time:2 Hours (4Ah With Full Charge,no Load)
- With Lcd Display

CDPC009

CORDLESS POLE CHAIN SAW



- Battery Voltage:20V
- Rated Power:800w(Brushless Motor)
- Chain Speed:8m/s
- Bar Length:8"
- Effective Cutting Diameter:200mm
- Chain:1/4"
- Total Length:1.8m-2.6m
- Auto Lubrication Oil Pumpct Blade, Pc Grimmer Head
- 2 Jacks Charger,with VDE Plug
- Color Box Packing

CDGT021-B

CORLESS GRASS TRIMMER



- BATTERY VOLTAGE:DC20V
- NO-LOAD SPEED:6500/min
- CUTTING WIDTH:150MM
- CUTTING LINE DIA.:1.2MM
- CUTTING LINE LENGTH:Ø1.2*3M
- TELESCOPIC LENGTH:220MM
- MOTOR HEAD ROTATABLE: 22.5/45/67.5/90/112.5 °
- WITH 1PC TCT BLADE
- WITH 2PCS 2T BALDE
- 1PAIR GLOVES,1PAIR GOGGLES
- COLOR BOX PACKING

CDGS036

**CORDLESS CHAIN SAW
(BRUSHLESS MOTOR 4820#)**



- BATTERY VOLTAGE:20V 4.0Ah
- RATED POWER:600W
- NO-LOAD SPEED:4600/min
- CHAIN SPEED:8M/S
- BAR LENGTH:8"
- CHAIN SPECIFICATION:1/4" 47 LINKS, GUAGE:1.1MM
- MAX. CUTTING LENGTH:200mm
- WITH LCD DISPLAY
- WITH AUTO LUBRICATE SYSTEM
- BMC PACKING

CDPC010

**CORDLESS POLE CHAIN SAW
(BRUSHLESS MOTOR)**



- Battery Voltage:DC20V
- Chain Speed:10m/s
- Bar Length:150mm/6
- Total Length:2.9m-3.4m
- Lightweight Telescopic Aluminum And Fibregalss Shaft For A Variable Height Adjustment
- Tool-free Chain Assembly And Tensioning
- Automatic Chain Lubrication
- Oil Capacity:40ml • With Soft Grip Hand
- Satety Switch With Switch-on-lock
- Shoulder Strap For An Optimal Weight

CDGT017

**CORDLESS GRASS TRIMMER
(BRUSHLESS MOTOR)**



- Battery Voltage:DC20V
- No-load Speed:6000/min
- Max Cutting Length:
- Brush Cutter:255mm
- String Trimmer:330mm
- 2 Split Shaft
- Alu. Telescopic
- With 1pc 25mm*3t Blade,1pc 255mm Tct Blade,1pc Grimmer Head
- Color Box Packing

CDP010-A/CDP010-B

CORDLESS 4 IN 1 GARDEN TOOLS



- Battery Voltage:40v(20V*2pcs)
- Motor Power:800w (Brushless Motor)

String Trimmer

- No-load Speed:6000min-1
- Cutting Diameter:330mm
- Line Dia:1.4mm,10m Dual Line
- Adjustable Trimmer Head

Brush Cutter

- Cutting Length:230mm
- No Load Speed:5000min-1

Pole Chain Saw

- Chain Speed:15m/s
- 120ml Oil Tank
- 12" Bar/chain

Pole Hedge Trimmer

- N0-load Speed:1600min-1
- 16" Dual Action Blades(410mm)
- Cutting Dia:24mm
- Safety Blade Protector

CDOHS001

OLIVE HARVESTER SHAKER



- BATTERY VOLTAGE:DC12V-52V
- POWER:350W(EXTERNAL ROTOR 3520#)
- NO-LOAD SPEED:800-1250/MIN
- WORKING WIDTH:425-630MM
- CARBON FIBER ROD WITH SCREW, EASY TO REPLACESPEC.
- OF CARBON FIBER ROD:4±Ø0.5*350mm
- OSCILLATING ANGLE:22°
- LENGTH OF TUBE(FIXED):2.5M
- LENGTH OF TUBE(TELESCOPIC):2.3M-3.45M
- WEIGHT:2.5KG(2.5M FIXED TUBE)
- WEIGHT:2.9KG(TELESCOPIC TUBE)
- CURRENT OF NO-LOADING: ABOUT 1.7A(FAST SPEED)
- COLOR BOX PACKING

CDPC011/CDPH005

POLE SAW/POLE HEDGE TRIMMER 2 IN 1



- NO-LOAD SPEED:1150/min
- BLADE LENGTH:450MM
- CUTTING LENGTH:410MM
- MAX CUTTING DIAMETER:16mm
- LASER CUTTING BLADE, WITH ALUMINUM BLADE PRESS BAR
- ELECTRONIC BRAKE
- WITH ROTARY CUTTING HEAD
- TOTAL LENGTH:1.95M-2.6M
- COLOR BOX PACKING
- CORDLESS POLE CHAIN SAW
- NO-LOAD SPEED:1200/min
- BAR LENGTH:200MM/8"
- TOTAL LENGTH:1.7M-2.35M
- WITH ROTARY CUTTING HEAD
- TOOL-FREE CHAIN ASSEMBLY AND TENSIONING
- AUTOMATIC CHAIN LUBRICATION
- WITH ROTARY CUTTING HEAD



CDGT019-A

CORDLESS BRUSH CUTTER (BRUSHLESS MOTOR 5025#)



- BATTERY VOLTAGE:DC20V
- NO-LOAD SPEED:7500/min
- CUTTING LENGTH:255MM (255*25.4*1.6MM,3T)
- PRODUCT WEIGHT:2.5KG
- DIA. OF ALU. TUBE:Ø26MM
- WITH HARD SHAFT DRIVER(9T)
- WITH U-TYPE HANDLE
- WITH 1PC 255MM*3T BLADE,WITH
- 1PC GRASS CUTTING HEAD



CDOHS001-12V

OLIVE HARVESTER SHAKER(BRUSHLESS MOTOR)



- BATTERY VOLTAGE:DC12V
- POWER:350W(BRUSHLESS MOTOR 3825#)
- NO-LOAD SPEED:800/1000/1200BPM
- MAX. WORKING WIDTH:530MM
- CARBON FIBER ROD WITH SCREW, EASY TO REPLACE
- SPEC. OF CARBON FIBER ROD:4±Ø0.5*350mm
- OSCILLATING ANGLE:22°
- LENGTH OF TUBE(FIXED):2.5M
- LENGTH OF TUBE(TELESCOPIC):3.1M



- WEIGHT:2.5KG(2.5M FIXED TUBE)
- WEIGHT:3.0KG(TELESCOPIC TUBE)
- CURRENT OF NO-LOADING:ABOUT 2.0A
- WITH 10M POWER CORD
- COLOR BOX PACKING

CDOHS002A

OLIVE HARVESTER SHAKER(BRUSHLESS MOTOR)



for 50V



for 20V



for 12V



- BATTERY VOLTAGE:DC12V-52V
- POWER:350W(BRUSHLESS MOTOR 3825#)
- NO-LOAD SPEED:800/1000/1200BPM
- MAX. WORKING WIDTH:530MM
- CARBON FIBER ROD WITH SCREW,EASY TO REPLACE
- SPEC. OF CARBON FIBER ROD:4±Ø0.5*350mm
- OSCILLATING ANGLE:22°
- LENGTH OF TUBE(FIXED):2.5M
- LENGTH OF TUBE(TELESCOPIC):3.1M
- WEIGHT:2.5KG(2.5M FIXED TUBE)
- WEIGHT:3.0KG(TELESCOPIC TUBE)
- CURRENT OF NO-LOADING:ABOUT 2.0A
- WITH 10M POWER CORD
- COLOR BOX PACKING

CDHT011

CORDLESS HEDGE TRIMMER



Makita type



- BATTERY VOLTAGE:DC20V
- 560# BRUSH MOTOR
- NO-LOAD SPEED:1400/min
- CUTTING LENGTH:520MM
- MAX CUTTING DIAMETER:15MM
- BLADE MATERIAL:65MN
- WITH ELECTRONIC BRAKE
- ALUMINUM BLADE COVER
- COLOR BOX PACKING

CDHT008-20V

CORDLESS HEDGE TRIMMER



Makita type

- BATTERY VOLTAGE:DC20V
- MAX. POWER:400W
- NO-LOAD SPEED:1600/min
- CUTTING LENGTH:500MM
- MAX CUTTING DIAMETER:17MM
- ELECTRONIC BRAKE
- ALUMINUM BLADE COVER
- NET WEIGHT:2.0KG
- WITH OVERHEAT/OVERLOAD PROTECTION
- WORKING TIME:60MIN WITH 4AH BATTERY
- COLOR BOX PACKING

**CDHT014-B
CDHT014-BL**

**CORDLESS HEDGE TRIMMER
(BRUSHLESS MOTOR 4815#)**



Makita type

- BATTERY VOLTAGE:DC20V
- NO-LOAD CURRENT:4.5A
- NO-LOAD SPEED:1350/min
- BLADE LENGTH:480MM
- MAX CUTTING DIAMETER:14MM
- ELECTRONIC BRAKE
- ALUMINUM BLADE COVER
- COLOR BOX PACKING

CDBL026-B

CORDLESS BLOWER



Makita type



- BATTERY VOLTAGE:DC21V
- 755# MOTOR
- MAX. SPEED:216KM/H(134MPH)
- AIR FLOW:285M³/H(168CFM)
- 3SETS SPEEDS
- WITH SPEED MEMORY FUNCTION
- DOUBLE-SIDED AIR INLET WITH WORM GEAR
- WITH 3 NOZZLES:ROUND NOZZLE/
BIG FLAT NOZZLE/OBLIQUE NOZZLE
- NET WEIGHT:1.2Kg
- COLOR BOX PACKING

CDBL015

CORDLESS BLOWER



Makita type



- Battery Voltage:DC20V 1.5Ah
- No-load Speed:16000/min
- Air Flow:6.8m³/min Or 240cfm
- Charge Time:4hours
- Running Time:10min
- Color Box Packing

CDBL020-BL

**CORDLESS BLOWER
(BRUSHLESS MOTOR)**



Makita type



- Battery Voltage:DC20V
- No-load Speed:5000-16500/min
- No-load Speed(Turbo):21500/min
- Air. Speed:36-126km/h
- Air. Speed Under Turbo:162km/h
- Air Flow:114-390m³/h
- Air Flow Under Turbo:504m³/h
- Variable Speed
- Soft Grip Handle
- Color Box Packing

CDBL030-SA

**CORDLESS BLOWER
(BRUSHLESS MOTOR)**



Makita type



- BATTERY VOLTAGE:DC40V(20VX2PCS)
- NO-LOAD SPEED:6500-16500/min
- TURBO SPEED:20000/min
- WIND SPEED:65-162KM/H
- TURBO WIND SPEED:202KM/H
- AIR FLOW:324-810m³/H
- TURBO AIR FLOW:1014m³/H
- PRODUCT SIZE:90*16*25.6CM
- TUBE LENGTH:42.5CM
- PRODUCT WEIGHT:1.6KG
- COLOR BOX PACKING

CDBL023-B

**CORDLESS BLOWER &
VACUUM**



Makita type



- BATTERY VOLTAGE:DC40V(20V*2PCS)
- NO-LOAD SPEED:8000-13000/min
- MAX. AIR SPEED:270KM/H
- MAX. AIR VOLUME:720M³/H
- SUCTION POWER:(235M³/H,139CFM)-
(510M³/H,300CFM)
- SHREDDING FUNCTION:15:1
- DUST BAG VOLUME:45L
- WITH CLEAN WINDOW
- ADJUSTABLE SECONDARY HANDLE
- SHOULDER STRAP
- COLOR BOX PACKING

CDBL029

CORDLESS BLOWER



Makita type



- BATTERY VOLTAGE:DC20V 1.5AH
- 755# MOTOR
- MAX. SPEED:252KM/H(156MPH)
- AIR FLOW:285M³/H(168CFM)
- 2SETS SPEEDS
- NET WEIGHT:1.2Kg
- COLOR BOX PACKING

CDLM013-33BL

CORDLESS LAWN MOWER (BRUSHLESS MOTOR)



Makita type



- BATTERY VOLTAGE:DC20V
- NO-LOAD SPEED:3800/min
- CUTTING HEIGHT:30/45/60MM(3 SETTINGS)
- MAX CUTTING LENGTH:330MM
- COLLECTION BAG:25L(FULL PLASTIC)
- FRONT WHEEL:135MM
- REAR WHEEL:135mm
- GEAR BOX DRIVER
- ELECTRIC BRAKE
- WITH SOFT START AND CONSTANT POWER
- COLOR BOX PACKING

CDERS002

CORDLESS RAKER & SCARIFIER



Makita type



- Battery Voltage:DC40V(20Vx2PCS)
- Power:650w
- No-load Speed:3000/min
- Working Width:38cm
- Working Depth:5 Setting:
-12/-9/-6/-3/+6mm
- Scarifier Blade:16pcs
- Aerator Spring:24pcs
- Collection Bag:50l
- Front Wheels:200mm
- Rear Wheels:150mm
- Angle Adjust Ment:3 Position
- Working Time:28min(4ah With Full Chrg)
- Carton Box Packing

CDST005-28

CORDLESS SNOW THROWER



Makita type



- BATTERY VOLTAGE:DC20V
- 400W BRUSH MOTOR
- NO-LOAD SPEED:2900/MIN
- MAX. WORKING WIDTH:28CM
- MAX WORKING DEPTH:15CM
- THROW DISTANCE:6M
- TELESCOPE RANGE:17CM
- MAX. LENGTH:140CM
- WORKING TIME:ABOUT 15MIN
(4Ah WITH FULL CHARGE WITH LOAD)
- CARTON BOX PACKING

CDLM013-38

CORDLESS LAWN MOWER (BRUSHLESS MOTOR)



Makita type



- CORDLESS LAWN MOWER
(BRUSHLESS MOTOR)
- BATTERY VOLTAGE:DC20V
- MOTOR POWER:560W
- NO-LOAD SPEED:3800/min
- CUTTING HEIGHT:25-70MM(6 SETTINGS)
- MAX CUTTING LENGTH:380MM
- COLLECTION BAG:45L(PLASTIC+MESH BAG)
- FRONT WHEEL:150MM(6")
- REAR WHEEL:175mm(7")
- GEAR BOX DRIVER
- ELECTRONIC BRAKE
- WITH SOFT START AND CONSTANT SPEED
- COLOR BOX PACKING

DCT007-BL

40V CORDLESS TILLER (BRUSHLESS MOTOR)



Makita type



- Battery Voltage:
DC20V(20Vx2PCS)
- Power:650w
- No-load Speed:175/min
- Max. Working Width:36cm
- Max Working Depth:22cm
- Blade:4*4pcs
- With 150mm Wheels
- With Foldable Handle
- Working Time:30min(4ah With Full Charge)
- Carton Box Packing

CDST007

CORDLESS SNOW THROWER



Makita type



- CORDLESS SNOW THROWER
- BATTERY VOLTAGE:DC20V
- 6030# BRUSHLESS MOTOR
- NO-LOAD SPEED:2500/MIN
- MAX. WORKING WIDTH:305CM
- MAX WORKING DEPTH:15CM
- THROW DISTANCE:6M
- CARTON BOX PACKING

RLM009

ROBOT LAWN MOWER



Makita type



- LAWNS UP TO:300M²
- BATTERY SETTING:PLUGGABLE BATTERY
- BATTERY PACK:20V/2.0AH/4.0AH
- AVERAGE CHARGING TIME:70MINS
- AVERAGE WORKING TIME:50MINS
- CUTTING HEIGHT:20-60MM
- CUTTING WIDTH:180MM/200MM
- MAX. CUTTING SLOPE:47%(25°)
- CUTTING MOTOR:BRUSHLESS
- CUTTING MOTOR SPEED:3100/MIN
- DRIVING MOTOR:BRUSHED WITH GEARBOX
- WATERPROOF RATING:IPX5
- NOISE RATING: < 60DB(A)
- FUNCTIONS:MULTI AREA MOWING:
4 AREA/WORKING TIME MANAGEMENT/
BOUNDARY COLLISION/
RAIN SENSOR DELAY SETTING/CUT TO EDGE/
GYROSCOPE/MULTI LANGUAGES/T
IME SYNCHRONIZATION/
ERROR MESSAGE RECORD/
ONE CLICK TO RETURN/
ANTI-THEFT
- 1 charging station
- 1 power adapter with VED plug
- 1pc 6 meter extension cord between
charging station and power adapter
- 1pc 2.0Ah Li-ion Battery pack
- 80 meters perimeter wire
- 100 pcs perimeter pegs
- 6pcs blades with screws
- 2pcs cable connector
- 6pcs charging station fixing nails
- 1pc L trpe wrench
- 1pc Guide ruler (on Master Carton)
- 1pc Instruction manual

CDPT001

CORDLESS SHEEP CLIPPER



Makita type



- BATTERY PACK VOLTAGE:DC20V
- RATED POWER:200W
- NO-LOAD SPEED:2800/min
- BMC PACKING

CDHPC004

CORDLESS PORTABLE CLEANER



Makita type



- BATTERY VOLTAGE:DC20V 2.0Ah
- MAX. WORKING PRESSURE:22Bar(320 PSI)
- MAX. WATER FLOW RATE:120L/H
- VERSATILE 5-IN-1 PRESSURE NOZZLE (0°,15°,25°,40°,AND WATERING SETTING)
- 1PC 6M WATER HOSE
- 1PC SOAP BOTTLE
- 1PC BRUSH
- 1PC MULTI-SPRAY NOZZLE

CDAS001

AGRICULTURE SPRAYER



Makita type



- LITHIUM AGRICULTURE SPRAYER
- BATTERY PACK VOLTAGE:DC20V
- LIQUID FLOW:1200ML/min,1600ML/min
- SPEED SWITCH:4BAR/5BAR
- MAX SPRAY DISTANCE: 7.5M/25 FEET
- PUMP TYPE:DIAPHRAGM PUMP
- TANK CAPACITY:12L/16L
- CONTINUOUS WORKING TIME:2 HOURS (2Ah BATTERY)
- BATTERY CYCLE LIFE:1000 CYCLES

CDPP001-B

CORDLESS BARREL PUMP



Makita type



- BATTERY VOLTAGE:DC20V
- MOTOR:RS555#
- NO-LOAD SPEED:11000/MIN
- MAX. FLOW RATE:35+L/min
- MAX. GAUGE HEIGHT:5M+
- PROTECT GRADE:IPX8
- DIA. OF OUTPUT:9MM
- NET WEIGHT:1.15KG
- COLOR BOX PACKING

CDFSS003

CORDLESS SPREADER



Makita type



- BATTERY VOLTAGE:DC20V
- MOTOR:385#
- MAX. MOTOR IDLE SPEED:15000RPM
- MAXIMUM SPEED:1500RPM
- 6-STAGE ELECTRONIC SPEED CONTROL
- 8-STEP ERGONOMIC SPREAD
- RATE CONTROL CAPACITY: 3.3L
- MAX. SPREAD DISTANCE:5M
- ERGONOMIC HANDLE WITH SOFT GRIP
- PLASTIC BLADE COVER FOR SAFE STORAGE

CDGS019

CORDLESS CHAIN SAW



- BATTERY VOLTAGE:12V 2.0Ah 10C
- NO-LOAD CHAIN SPEED:3.8M/S
- GUIDE BAR LENGTH:153MM
- 1/4",16 DRIVE LINKS,32 CHAIN PITCH
- MAX. CUTTING LENGTH: 100mm
- WITH 2PCS BATTERIES
- 1.5A QUICK CHARGER, WITH VDE PLUG
- BMC PACKING

CDGS024

CORDLESS CHAIN SAW



- Power:350w(Brushless Motor)
- Battery Voltage:16.8v 2Ah(21700)
- No-load Chain Speed:11m/s
- Bar Length:5" Bar And Chain 1/4" 32e
- Chain Sprocket:7 Tooth
- Max. Cutting Length: 120mm
- Machine Weight:880g
- Battery Weight:260g(2Ah)
- Battery Weight:360g(4Ah)
- With 1.7a Quick Charger
- No Load Running Time: 24min(2Ah)/52min(4Ah)

CDT010

CORDLESS GRASS TRIMMER & SHRUB SHEAR



- Battery Voltage:DC3.6V/7.2V
- No Load Speed:1100spm
- Grass Shear Blade Width:75mm
- Tooth Spacing:8mm
- Charge Time:3-5 Hours, GS
- Running Time:40 Minutes

CDPS022

LITHIUM CORDLESS SECATEURS



- Battery Voltage: DC7.2v 1.5Ah
- Standard Cut Capacity: 18mm
- Max Cutting Capacity At Full Charge: **22mm**
- With Safty Switch
- Charge Time: 3-5hours, GS
- Cutting Capacity: 800cuts(8mm Branch)
- 700cuts(10mm Branch) 300cuts(15mm Branch)
- 200cuts(18mm Branch) 80cuts(20mm Branch)
- Color Box Packing

CDPS023-B

ELECTRONIC PRUNING SHEAR (BRUSHLESS MOTOR)



- Battery Voltage: DC7.2v 4.0Ah(21700)
- Max Power: 250w Brushless Motor
- Motor Speed: 23000/min
- Weight Of Scissors: 0.9kg
- Max Cutting Capacity: **20mm**
- Material Of Blade: Sk5(Imported From Japan)
- Cutting Capacity: 3500-4000cuts(20mm Branch)
- Color Box Packing

CDPS033

ELECTRONIC PRUNING SHEAR (BRUSHLESS MOTOR)



- Battery Voltage: DC16.8v 1.5Ah
- Motor Speed: 23000/min
- Weight Of Scissors: 850g
- Max Cutting Capacity: **25mm/30mm**
- Operating Time: 2-3 Hours(One Battery)
- Charge Time: 1.5-2hours
- Material Of Blade: Sk5
- BMC Packing

CDPS009-30

ELECTRONIC PRUNING SHEAR (BRUSHLESS MOTOR)



- Battery Voltage: DC16.8v 2.6Ah
- Motor Speed: 23000/min
- Brushless Motor
- Weight Of Scissors: 0.68kg
- Max Cutting Capacity: **30mm**
- Operating Time: 3-4 Hours
- Charge Time: 2hours
- Material Of Blade: Stainless Alloy
- With 2pcs Batteries
- With Finger Protect And Progressive Function
- BMC Packing

CDPS009-35

ELECTRONIC PRUNING SHEAR (BRUSHLESS MOTOR)



- Lithium Battery Voltage:DC16.8v 4.5Ah
- Motor Speed:23000/min
- Weight Of Scissors:1079g(With Battery)
- Max Cutting Capacity:**35mm**
- Operating Time: 5-6 Hours
- Charge Time:2hours
- Material Of Blade:stainless Alloy
- With 2pcs Batteries
- With Finger Protect And Progressive Function

CDPS030-32B

ELECTRONIC PRUNING SHEAR (BRUSHLESS MOTOR)



- Battery Voltage:DC16.8v 4Ah(21700)
- Max. Motor Power:840w
- Motor Speed:23000/min
- Weight Of Scissors:740g
- Weight Of Battery:260g(2Ah)/360g(4Ah)
- Cutting Capacity:**25mm/35mm**
- Operating Time: 2-3 Hours(One 2Ah Battery)
- Charge Time:2-2.5hours
- Material Of Blade:stainless Alloy
- With Progressive Function
- With Lcd Display

CDPS042

CORDLESS SECATEURS



- BATTERY VOLTAGE:DC3.6V 1.5AH
- CUTTING MAX:**10MM**
- CUTTING CAPACITY:800CUTS (8MM SOFT WOOD)
- 65Mn MOVING BLADE
- WITH SAFTY SWITCH
- CHANGEABLE MOVING BLADE
- WITH 1PC TYPE-C CHARGING CABLE
- COLOR BOX PACKING

CDPS019-25B

ELECTRONIC PRUNING SHEAR (BRUSHLESS MOTOR)



- LITHIUM BATTERY VOLTAGE:DC16.8V 2.0Ah
- MAX POWER: 300W BRUSHLESS MOTOR
- RATED CURRENT:15.0A
- CURRENT PROTECTION STOP POINT:>60A
- MOTOR SPEED:23000/min
- WEIGHT OF SCISSORS:0.9KG
- MAX CUTTING CAPACITY:**20/25MM**
- OPERATING TIME: 2-3 HOURS(ONE BATTERY)
- CHARGE TIME:1.5-2HOURS
- MATERIAL OF BLADE:SK5 (IMPORTED FROM JAPAN)
- WITH 2PCS BATTERIES
- BMC PACKING

OM160

OLIVE HARVESTER SHAKER



- Direct voltage:12V BRUSH MOTOR
- Input power:**130W**
- No load speed:800-1000r/min
- Rake wide: 255mm
- Cable length:7m
- Weight without cable: 3.4kGS
- Telescopic length from:2.1-2.9m
- Noise Pressure Level:96db(A)
- Noise Power Level: 102db(A)
- Large aluminum pipe: 35X 1450X1.2mm
- Small aluminum pipe: 28.5 X 1000 X 1.5mm

OM300/OM500

OLIVE HARVESTER SHAKER



- DIRECT VOLTAGE:12/21V BRUSH/BRUSHLESS MOTOR
- Input power:**300W 12V Brush / 500W 21V Brushless**
- No load speed:800-1000r/min
- Rake wide:255mm
- Cable length:7m
- Telescopic length from:2.1-3.0m
- Noise Pressure Level:96db(A)
- Noise Power Level:102db(A)

GR001-C

ELECTRIC GRASS TRIMMER



- Voltage/frequency:110V/230V ~ 50Hz/60Hz
- Input Power:**250w**
- No-load Speed:12000/min
- Cutting Width:22cm
- Line Diameter:1.2mm, 6m Length
- Twin Line Bump Feed Spool
- Cable:h05vv-f 2x0.75mm²With VDE
- Plug,length:35cm

GR002-C

ELECTRIC GRASS TRIMMER



- VOLTAGE/FREQUENCY: 110V/230V ~ 50Hz/60Hz
- **INPUT POWER: 350W**
- NO-LOAD SPEED: 12000/min
- CUTTING WIDTH: 25CM
- LINE DIAMETER: 1.2MM, 6M LENGTH
- TELESCOPE RANGE: 30CM
- TWIN LINE BUMP FEED SPOOL
- ADJUSTABLE AUXILIARY HANDLE
- 5 POSITION ADJUSTABLE MOTOR HEAD
- CABLE: H05VV - F 2x0.75MM2 WITH VDE PLUG, LENGTH: 35CM
- COLOR BOX PACKING

GR019-A

ELECTRIC GRASS TRIMMER



- VOLTAGE/FREQUENCY: 110V/230V ~ 50Hz/60Hz
- **INPUT POWER: 450W**
- NO-LOAD SPEED: 10500/min
- CUTTING WIDTH: 28CM
- TELESCOPE RANGE: 29CM(91.5-120.5CM)
- NYLON SPOOL WITH Ø1.4MM*6M NYLON LINE

GR019-B

ELECTRIC GRASS TRIMMER



- VOLTAGE/FREQUENCY: 110V/230V ~ 50Hz/60Hz
- **INPUT POWER: 600W**
- NO-LOAD SPEED: 10500/min
- CUTTING WIDTH: 30CM
- TELESCOPE RANGE: 29CM(91.5-120.5CM)
- NYLON SPOOL
- WITH Ø1.4MM*6M NYLON LINE
- WITH TAP & GO FEED SYSTEM.
- 5 STEPS ADJUSTABLE MOTOR HEAD
- CUTTING ANGLE
- ADJUSTABLE FROM 0° TO 90°

GR018

ELECTRIC BRUSH CUTTER



- VOLTAGE/FREQUENCY: 230V ~ 50Hz
- **INPUT POWER: 1200W**
- NO-LOAD SPEED: 6500/min(GRASS TRIMMER)
- NO-LOAD SPEED: 7500/min(BRUSH CUTTER)
- CUTTING WIDTH: 35CM FOR GRASS TRIMMER, 23CM FOR BRUSH CUTTER
- LINE DIAMETER: 2MM, 4M LENGTH
- SPLIT STEEL SHAFT
- BUMP FEED SPOOL
- CABLE: H05VV-F 2x0.75mm2, VDE PLUG, LENGTH: 35CM

GR014-B

ELECTRIC BRUSH CUTTER



- Voltage/frequency: 110V/230V ~ 50Hz/60Hz
- **Input Power: 1200w**
- No-load Speed: 6800/min(Grass Trimmer)
- No-load Speed: 8000/min(Brush Cutter)
- Cutting Width: 38cm For Grass Trimmer, 25cm For Brush Cutter
- Line Diameter: 2.0mm, 5m Length
- Split Alu. Shaft Dia.: 26mm
- Bump Feed Spool

GR014-C

ELECTRIC BRUSH CUTTER



- Voltage/frequency: 110V/230V ~ 50Hz/60Hz
- **Input Power: 1200w**
- No-load Speed: 6800/min(Grass Trimmer)
- No-load Speed: 8000/min(Brush Cutter)
- Cutting Width: 38cm For Grass Trimmer, 25cm For Brush Cutter
- Line Diameter: 2.0mm, 5m Length
- Split Alu. Shaft Dia.: 26mm
- Bump Feed Spool

WSW003

WEED SWEEPER



- Voltage/frequency: 110V/230V ~ 50Hz/60Hz
- **Input Power: 400w**
- No-load Speed: 1800/min
- Brush Dia.: 110mm
- Telescopic Long Tube
- With 1pc Wire Brush, 1pc Plastic Brush
- Color Box Packing

EVB021

ELECTRIC VACUUM BLOWER



- Voltage/frequency: 110V/230V ~ 50Hz/60Hz
- **Input Power: 3000w**
- No-load Speed: 15000/min
- Vacuum Air Speed 250km/h
- Blow Air Volume 10.7m³/min
- Collection Bag: 40l
- Mulching Ratio: 10:1
- 3 Function: blowing/suction/shredding
- 2x0.75mm² With VDE Plug, length: 35cm

EVB004

ELECTRIC VACUUM BLOWER



- Voltage/frequency: 110V/230V ~ 50Hz/60Hz
- **Input Power: 2000w/2500w/2800w/3000w**
- Max Vacuum Air Speed: 100-275km/h
- Max Air Volume: 13.5m³/min
- Collection Bag: 45l • Mulching Ratio: 10:1
- No-load Speed: 8000-14000/min
- 3 Function: blowing/suction/shredding
- With Telescopic Tube, both 1.6m And 1.9m

EVB015

ELECTRIC BLOWER



- Voltage/frequency:110V/230V ~ 50Hz/60Hz
- **Input Power:1800/2000/2300/2400 /2500/2800/3000w**
- No-load Speed:9000-19000/min
- Max Vacuum Air Speed:350km/h
- Max Air Volume:16m³/min

ECS028-P

ELECTRIC CHAIN SAW



- VOLTAGE/FREQUENCY:230V ~ 50Hz
- **INPUT POWER:1800W**
- NO-LOAD SPEED:4800/min
- CHAIN/BAR LENGTH:400MM/16"
- CHAIN SPEED:10.5M/S
- OIL TANK: 150mL
- WITHOUT BREAK
- AUTOMATIC OIL LUBRCATION WITH WINDOW

ECS024

ELECTRIC CHAIN SAW (LONGITUDINAL MOTOR)



- Voltage/frequency:110V/230V ~ 50Hz/60Hz
- **Input Power:2000w Without Softstart**
- **Input Power:2400w With Softstart**
- No-load Speed:8500/min
- Chain/bar Length:406mm/16"
- Chain Speed:15m/s
- Chain Brake Activates In Less Than 0.15 Seconds
- Automatic Oil Lubrcation With Window To Gauge Oil Level
- With Sds(Quick Replace Blade Function)

EHT015

ELECTRIC HEDGE TRIMMER



- Voltage/frequency:110V/230V ~ 50Hz/60Hz
- **Input Power:450w**
- No-load Speed:1700/min
- Max. Cutting Dia:16mm
- Blade Length:410mm
- Blade Material:punching Blade
- Dual Action Blades For A Fast And Clean Finish
- Electrical Brake
- 35cm Power Cord,with VDE Plug
- Color Box Packing

ECS028-A

ELECTRIC CHAIN SAW



- VOLTAGE/FREQUENCY:230V ~ 50Hz
- **INPUT POWER:1800W**
- NO-LOAD SPEED:4800/min
- CHAIN/BAR LENGTH:400MM/16"
- CHAIN SPEED:10.5M/S
- OIL TANK: 150mL
- WITHOUT BREAK
- LOCK OFF BUTTON FOR SAFETY OPERATION
- AUTOMATIC OIL LUBRCATION
- WITH WINDOW TO GAUGE OIL LEVEL
- 35CM POWER CORD,WITH VDE PLUG

PCS005-FIX

2 IN 1 POLE CHAIN SAW/ HEDGE TRIMMER



- Voltage/frequency: 110V/230V ~ 50Hz/60Hz
- Pole Chain Saw
- **Input Power:710w**
- Chain Speed:9.5m/s
- Chain/bar Length:8
- Oil Capacity:100ml
- Chain Brake Activates In Less Than 0.15 Seconds
- Telescopic Tube:aluminium 235cm
- Automatic Oil Lubrcation
- Adjustable Cutting Head
- Electric Pole Hedge Trimmer
- Input Powe:**500w**
- Max. Cutting Dia:16mm
- Blade Length:450mm
- Laser Cutting Blader
- Adjustable Cutting Angles

EHT012-C

ELECTRIC HEDGE TRIMMER



- Voltage/frequency:110V/230V ~ 50Hz/60Hz
- **Input Power:620w**
- No-load Speed:1500/min
- Max. Cutting Dia:24mm
- Blade Length:610mm
- Aluminum Blade Holder
- Mechanical Brake
- With Rotatable Handle
- Net Weight:3.8kg
- 35cm Power Cord,VDE Plug

ECS026-WB

ELECTRIC CHAIN SAW



- Voltage/frequency: 110V/230V ~ 50Hz/60Hz
- **Input Power:1600w**
- No-load Speed:5500/min
- Chain/bar Length:355mm/14"
- Chain Speed:10.5m/s
- Oil Tank: 110ml
- Chain Brake Activates In Less Than 0.15 Seconds
- Lock Off Button For Safety Operation
- Automatic Oil Lubrcation With Window To Gauge Oil Level
- 35cm Power Cord,with VDE Plug
- Color Box Packing

EHT010

2 IN 1 POLE CHAIN SAW/ HEDGE TRIMMER



- **Electric Pole Hedge Trimmer**
- Voltage/frequency:110V/230V ~ 50Hz/60Hz
- **Input Power:500w**
- No-load Speed:1600/min
- Max. Cutting Dia:20mm • Blade Length:410mm
- Cutting Head Can Adjust To 5 Different Angles -30° ~ 90°
- **Electric Pole Chain Saw**
- **Input Power:700w**
- Chain Speed:10m/s
- 8" Chain And Bar
- Max Length:2.7m
- Electrical Brake
- **Carbon Fiber Tube**
- 1.95-2.53m Telescopic Tube
- 35cm Power Cord,with VDE Plug
- Color Box Packing

EX004

6 IN 1 GARDEN TOOLS



- Voltage/frequency: 110V/230V ~ 50Hz/60Hz
- **Input Power:900w**
- No-load Speed:6900/min
- Grass Trimmer & Brush Cutter
- Cutting Width:36cm For Grass Trimmer,23cm For Brush Cutter
- Line Diameter:1.6mm, 8m Length
- Split Steel Shaft Dia.: 26mm
- Bump Feed Spool

- Pole Saw**
- Chain Speed:13m/s
- Chain/bar Length:8"
- With Automatic Oil Lubrcation
- Hedge Trimmer**
- No-load Speed:1000/min
- Cutting Capacity:20mm
- Cutting Length:410mm
- Laser Cutting Blade
- H05vv-f2*1.0mm2,35cm Power Cord, With VDE Plug
- Color Box Packing

EGS001-D

ELECTRIC GARDEN SHREDDER



- Voltage/frequency: 110V/230V ~ 50Hz/60Hz
- **Input Power:2000w/2400w**
- No-load Speed:4500/min
- Max. Cutting Diameter:40mm
- Collection Bag:50l
- Net Weight:10.5kg

EGS001-H

ELECTRIC GARDEN SHREDDER



- VOLTAGE/FREQUENCY: 110V/230V ~ 50Hz/60Hz
- **INPUT POWER:2600W(P40)**
- NO-LOAD SPEED:4500/min
- MAX. CUTTING DIAMETER:45MM
- COLLECTION BAG:45L
- WITH CURRENT AND TEMPERATURE PROTECTION
- NET WEIGHT:8.7Kg
- 35CM POWER CORD,WITH VDE PLUG
- COLOR BOX PACKING

EGS016

ELECTRIC GARDEN SHREDDER



- VOLTAGE/FREQUENCY: 110V/230V ~ 50Hz/60Hz
- **INPUT POWER:2800W(P40)**
- NO-LOAD SPEED:4500/min
- MAX. CUTTING DIAMETER:45MM
- COLLECTION BOX CAPACITY:50L
- WITH OVERCURRENT SAFE GUARD SWITCH
- 35CM POWER CORD,WITH VDE PLUG
- COLOR BOX PACKING

EGS013

SILENT ELECTRIC GARDEN SHREDDER



- Voltage/frequency:110V/230V ~ 50Hz/60Hz
- **Input Power:2800w/15a**
- No-load Speed:50/45/min
- Max. Cutting Diameter:45mm
- Collection Box Capacity:50l
- Auto Overload Protection
- Motor Overload Protection
- Noise:lwa 96db
- 35cm Power Cord,with VDE Plug
- Color Box Packing

EGS007

SILENT ELECTRIC GARDEN SHREDDER WITH BOX



- Voltage/frequency:110V/230V ~ 50Hz/60Hz
- **Input Power:2600w(Induction Motor) S6/40%**
- No-load Speed:50/min
- Max. Cutting Diameter:40mm
- Collection Box Capacity:60l
- Work Mode:roll Cutting
- Electro Megnetic Switch

ET013-32

ELECTRIC GARDEN SHREDDER



- VOLTAGE/FREQUENCY: 110V/230V ~ 50Hz/60Hz
- **INPUT POWER:800W**
- NO-LOAD SPEED:380/min
- WORKING WIDTH:32CM
- MAX WORKING DEPTH:22CM
- FOLDABLE AND SPACE SAVING HANDLE BAR
- SAFETY LOCK-OFF SWITCH
- GEAR RATIO:4.8
- 35CM POWER CORD,WITH VDE PLUG
- Electronic Brake

ET011-36

ELECTRIC TILLER



- Voltage/frequency:230V ~ 50Hz
- **Input Power:1050w**
- No-load Speed:390/min
- Working Width:36cm
- Working Depth:22cm
- Dimensions Of Chopping Tool: 205mm
4pcs*4 Rotating Blades

ET011-40

ELECTRIC TILLER



- Voltage/frequency:230V ~ 50Hz
- **Input Power:1200w**
- No-load Speed:390/min
- Working Width:40cm
- Working Depth:22cm
- Dimensions Of Chopping Tool:205mm
4pcs*6 Rotating Blades

ET011-45

ELECTRIC TILLER



- Voltage/f frequency:230V ~ 50Hz
- **Input Power:1500w**
- No-load Speed:390/min
- Working Width:45cm • Working Depth:22cm
- Dimensions Of Chopping Tool:205mm
4pcs*6 Rotating Blades

ERS016-32

ELECTRIC RAKER & SCARIFIER



- VOLTAGE/FREQUENCY:230V ~ 50Hz
- **INPUT POWER:1500W**
- NO-LOAD SPEED:3700/min
- WORKING WIDTH:32CM
- BLADE COUNTS: 16
- SPRING COUNTS: 20
- WORKING DEPTH:4 SETTING:
-12/-8/-4/+4MM
- COLLECTION BAG:30L

- 180MM FRONT WHEEL,
100MM BACK WHEEL
- WATER PROOF:IPX4
- 35CM CORD,VDE PLUG
- CARTON BOX PACKING

ERS016-38

ELECTRIC RAKER & SCARIFIER



- VOLTAGE/FREQUENCY:
230V ~ 50Hz
- INPUT POWER:1500W
- NO-LOAD SPEED:3700/min
- WORKING WIDTH:38CM
- BLADE COUNTS: 16
- SPRING COUNTS: 24
- WORKING DEPTH:4 SETTING:
-12/-9/-6/-3/+6MM
- COLLECTION BAG:45L
- 190MM FRONT WHEEL,1
45MM BACK WHEEL
- 35CM CORD,VDE PLUG
- CARTON BOX PACKING

ERS012-A

ELECTRIC RAKER & SCARIFIER



- Voltage/frequency:110V/230V ~ 50Hz/60Hz
- **Input Power:1500w**
- No-load Speed:3000/min
- Working Width:32cm
- Working Depth:4 Setting:-12/-8/-4/+4mm
- Collection Bag:30l
- 7" Front Wheel,4" Back Wheel

ERS013-38

ELECTRIC RAKER & SCA



- Voltage/frequency:
110V/230V ~ 50Hz/60Hz
- **Input Power:1600w/13a**
- **Input Power:1800w/13a**
- No-load Speed:3500/min
- Working Width:38cm
- Working Depth:5 Setting:-12/-9/-6/-3/+6mm
- Collection Bag:45L
- 8" Front Wheel,6" Back Wheel

ERS013-40

ELECTRIC RAKER & SCARIFIER



- Voltage/frequency:
110V/230V ~ 50Hz/60Hz
- **Input Power:1800w**
- No-load Speed:3722/min
- Working Width:40cm
- Working Depth:
5 Setting:-13/-9/-5/-1/+5mm
- Collection Bag:55l
- 180mm Front Wheel, 150mm Back Wheel

LM021-A

32CM ELECTRIC LAWN MOWER



- VOLTAGE/FREQUENCY: 110V/230V ~ 50Hz/60Hz
- **INPUT POWER:1300W**
- NO-LOAD SPEED:3500/min
- CUTTING CAPACITY:32CM
- CUTTING HEIGHT:25/40/55MM
- 32L COLLECTION BOX(FULL PLASTIC)
- WHEEL SIZE:140MM(FRONT/REAR)
- GEAR DRIVER

LM016-38

38CM ELECTRIC LAWN MOWER(BELT DIRVER)



- Voltage/frequency:110V/230V ~ 50Hz/60Hz
- **Input Power:1600w**
- No-load Speed:3500/min
- Cutting Capacity:38cm
- Cutting Height:25-75mm
- 45l Collection Box
- Front Wheel:16m • Rear Wheel:20cm
- Break:≤3s

LM016-42

42CM ELECTRIC LAWN MOWER(BELT DIRVER)



- Voltage/frequency:110V/230V ~ 50Hz/60Hz
- **Input Power:2000w**
- No-load Speed:3500/min
- Cutting Capacity:42cm
- Cutting Height:25-75mm
- 45l Collection Box
- Front Wheel:16m • Rear Wheel:20cm
- Break:≤3s

ESS002

ELECTRIC CHAIN SAW SHARPENER



- Voltage/Frequency:110V/230V ~ 50Hz/60Hz
- **Input Power:90W**
- No Load Speed:5000/min
- Wheel Dia.:105mmx22.2mmx3.2mm
- Magnet Motor
- 2m Power Cord,with VDE Plug

ESS006

ELECTRIC CHAIN SAW SHARPENER



- Voltage/Frequency:110V/230V ~ 50Hz/60Hz
- **Input Power:160W**
- No Load Speed:3000/min
- Wheel Dia.:145mm
- Induction Motor
- 2m Power Cord,with VDE Plug

ESS007

ELECTRIC CHAIN SAW SHARPENER



- Voltage/frequency:110V/230V ~ 50Hz/60Hz
- **Input Power:230W**
- No Load Speed:3000/min
- Wheel Dia.:145mmx22.3mmx4.7/3.2mm
- Induction Motor
- 2m Power Cord,with VDE Plug

LSH4T37

HORIZONTAL LOG SPLITTER



- Voltage/frequency:110V/230V ~ 50Hz/60Hz
- **In-put Power:2000w**
- Work Force:4ton
- Wood Length(Max):370mm
- Wood Dia.(Max):250mm
- Hydraulic Fluid Capacity:1.8l
- Protection Degree:ip54
- 2m Power Cord,with VDE Plug
- Carton Box Packing

LSH5T52

HORIZONTAL LOG SPLITTER



- Voltage/Frequency:110V/230V ~ 50Hz/60Hz
- **In-put Power:2000W**
- Work Force:5ton
- Wood Length(Max):520mm
- Wood Dia.(Max):250mm
- Hydraulic Fluid Capacity:3.0L
- Protection Degree:IP54
- 2m Power Cord,with VDE Plug

LSH7T52HF

HORIZONTAL LOG SPLITTER



- Voltage/frequency:110V/230V ~ 50Hz/60Hz
- **In-put Power:2200w**
- Work Force:7ton
- Wood Length(Max):520mm
- Wood Dia.(Min):?50mm
- Wood Dia.(Max):?250mm
- Protection Degree:ip54
- 2m Power Cord,with VDE Plug
- Carton Box Packing

LSV8T-55

VERTICAL LOG SPLITTER



- Voltage/frequency: 110V/230V ~ 50Hz/60Hz
- In-put Power:3000W
- Work Force:8ton
- Wood Dia.:70-400mm
- Wood Length(Max):550mm

LS400A

LOG SAW



- Voltage/Frequency:110V/230V ~ 50Hz/60Hz
- In-put Power:2200W
- Cutting Dia.:30-135mm
- Blade Size:ø405xø30x3.2mmx32T
- With 38cm Power Cord,water Proof Plug
- With Emergency Switch

HPS680

HAND PUSH SWEEPER



- CONTAINER CAPACITY: 12L
- SPEED: 4KPH
- AREA SWEEPED: 2800m²/H
- OPERATING WIDTH: 680MM
- ACC.:2PCS ROUND BRUSHES, 6 PCS SCREWS FOR BRUSH, 1PC PUSH BAR, 2PCS BIG SCREWS, 2PCS ADJUSTABLE SWITCHES, 2PCS PLASTIC DASHES

EST002-A

ELECTRIC SNOW THROWER



- Voltage/Frequency:110V/230V ~ 50Hz/60Hz
- Input Power:1300W/9A
- No-load Speed:4000/min
- Clearing Width:30cm(12")
- Clearing Depth:15cm(6")
- Throw Distance:6m(20')
- Color Box Packing

EST003

ELECTRIC SNOW THROWER



- VOLTAGE/FREQUENCY: 110V/230V ~ 50Hz/60Hz
- INPUT POWER:1500W
- NO-LOAD SPEED:4500/min
- CLEARING WIDTH:34CM
- CLEARING DEPTH:12CM
- THROW DISTANCE:9M

EST006-C

ELECTRIC SNOW THROWER



- Voltage/Frequency:110V/230V ~ 50Hz/60Hz
- Input Power:2300W
- No-load Speed:3000/min
- Clearing Width/Depth:50cm(20")/25cm(10")
- Roller Diameter:ø172mm
- Throw Distance:9m(30')
- *Throwing Angle:horizontal 180°
Vertical 15-60°
- With 2pcs Led Light,100lm
- 180mm Wheel With Dual Color

GSS30

HAND PUSH MOWER



- Max.cutting Width:300mm
- Max.cutting Height:14-47mm
- Wheel Dia.:217mm
- Spiders Qty:3
- Weight:6.2kg
- Color Box Packing

BCP350BD-1

SUBMERSIBLE PUMP



- Voltage/frequency: 110V/230V ~ 50Hz/60Hz
- Input Power:350w
- Flow Rate:100l/min
- Max. Gauge Height:7m
- Max. Depth: 7m
- Max.grain Size: 5mm
- Dia. Of Pipe:1" Or 1-1/2"
- Float Switch
- H05RN-F 3G0.75mm² 10M CABLE

PM45

SELF-PRIMING JET PUMP



- Voltage/frequency:230V ~ 50Hz
- Input Power:370w/0.5hp
- Max. Flow:35l/min
- Max. Head:38m
- Inlet/outlet:1"*1"
- Aluminum Pump Body
- Aluminum Impeller
- 30cm Power Cord
- Color Box Packing

JET100A

SELF-PRIMING JET PUMP



- Voltage/frequency:230V ~ 50Hz
- **Input Power:750w(Ø110*60mm)**
- Flow Rate:3600l/h
- Max. Head:38m
- Inlet/outlet:1"*1"
- Aluminum Pump Body
- Aluminum Impeller
- 1.5m Power Cord,with VDE Plug
- Color Box Packing

2TCP25/160B

TWO-STAGE CENTRIFUGAL PUMP



- Voltage/frequency:230V ~ 50Hz
- **Input Power: 2hp(Ø128*90mm)copper Motor**
- Flow Rate:160l/min
- Max. Head:55m
- Inlet/outlet:1.5"*1"
- Cast Iron Pump Body
- C&u Bearing
- With 35cm Power Cord

MVP200

MASKING VIBRATION PUMP



- Voltage/frequency: 110V/230V ~ 50Hz/60Hz
- **Input Power:250w**
- Flow Rate:1050l/h
- Max. Head:70m
- Aluminum Pump Body
- Ipx8 2h/20min
- Pump Dia.:98mm
- H05RN-F 3G0.75MM2 10M CABLE

QDX1.5-16-0.37

RINSING SUBMERSIBLE PUMP



- Voltage/frequency: 110V/230V ~ 50Hz/60Hz
- **Input Power:0.5hp/370w**
- Flow Rate: 25l/min
- Max. Head:16m
- Dia. Of Outlet:25mm
- C&u Bearing
- Float Switch
- Aluminum Impeller
- 7m Power Cord,with VDE Plug

PT007

SHEEP CLIPPER



- VOLTAGE/FREQUENCY: 110V/230V ~ 50Hz/60Hz
- **INPUT POWER:500W**
- NO LOAD SPEED:3000/min
- CUTTING WIDTH:80MMM
- 5M POWER CORD,WITH VDE PLUG
- BMC PACKING

WSW005

MULTI-FUNCTION BRUSH



- VOLTAGE/FREQUENCY:230V ~ 50Hz
- INPUT POWER:300W
- NO-LOAD SPEED:1200/min
- MAX. WORKING WIDTH:440MM
- H05VV-F 2x0.75mm2,VDE PLUG,35CM
- MAIL BOX PACKING

HGT001

GRAFTING TOOL



- With 1pc Ω Type Blade
- With 1pc V Type Blade
- With 1pc U Type Blade
- With 1pc Tape
- Double Blister Card Packing

CDTYM002-B

CORDLESS TYING MACHINE



- Battery Pack Voltage:DC16.8v 2Ah/4Ah
- Rated Power:60w • Tying Capacity:25mm
- Time Of Tying:about 7500/15000 Times
- Net Weight:850g(With Battery)
- Battery Weight:260/360g
- Working Time:15000 Times(2Ah Battery With Full Charge)
- 1.5h Quick Charger • Two Batteries

CDTYM001-A

CORDLESS TYING MACHINE



- Battery Pack Voltage:DC8.4v 2Ah
- Tying Capacity:50mm
- Working Time:about 12 Hours
- Net Weight:800g(With Battery)
- 1.5-2 Hours Quick Charger
- With 2 Rolls Of Cable Ties