

GLOBAL CERTIFICATION

Each product can only reach users after undergoing rigorous "physical examination" such as safety testing/reliability testing/application testing

ONE-STOP BATTERY SOLUTIONS

Portable Power Station | UPS | Jump Starter



200-3600 W
PORTABLE POWER STATION

SHENZHEN CTECHI TECHNOLOGY CO., LTD

 www.ctechipower.com www.ctechibattery.com

 Business cooperation :info@ctechi.com.cn

 Headquarters Address: Jiada Industrial Park, Yanluo Street, Baoan District, Shenzhen

COMPANY PROFILE

SHENZHEN CTECHI TECHNOLOGY CO., LTD.

OUR STORY

Shenzhen CTECHi Technology Co., Ltd. is an energy storage expert with 20 years' experience in battery industry. We offer one-stop battery solutions as well as ODM, OEM, and SKD services, focusing on the R&D and manufacturing of a wide range of batteries, including energy storage systems, motive power batteries and digital & consumer batteries.

We have accumulated rich experiences on the energy storage solution through more than 30,000 customized cases, which enables us to provide tailored solutions and prompt responses to our clients' diverse needs. Whether you require small-quantity orders or full-service packages that includes shipping, certification and freight, we are committed to meeting your specific requirements.

With state-of-the-art facilities covering an area of 100,000+ square meters in Guangdong and Hunan provinces, CTECHi is committed to rigorous product production, strict quality control, precise testing and recognized international certification to ensure the high quality of products.

Thanks to our dedicated professional team, CTECHi has earned a solid reputation for innovation and reliability. We are committed to growing together with our customers by providing them with products and marketing strategies that meet their target markets, thereby supporting our customers expanding more market share, which is also in line with CTECHi's philosophy: Growth! Happiness! Respectable!

3



Manufacture Sites

1500+



Employees

300



Senior Researchers

100000 m²



Production Base

2005

CTECHi Founded

2008

Built CTECHi's own factory
Provided lithium battery solution

2010

Formed a complete R&D team and R&D system

2015

Launched portable power station (All series were made of LiFePO₄ Batteries)

2018

Awarded National High-Tech Enterprise

2020

Established CTECHi Energy Storage Industrial Park

2022

Series A funding round
National SRDI Little Giant Industry standard setter

2023

Launched BESS and BSS

PORTABLE POWER STATION



GT280

LiFePO4



POWER 280W **CAPACITY (Wh)**
Peak Power 480W 192/ 230/ 307/ 384

Life Cycle: 3500(85%)
USB Output: QC3.0*2: (18W) Max
USB-C Input/Output: PD&QC3.0*1: (60W) Max
DC Output: DC5521*2 (120W) Max
AC Output: 220V~240V (50Hz)
 100~120V ((50Hz /60Hz))
DC Input: 20V=3A, 60W(7909)
Solar / Car Charge: 12V~29V= 4A Max
Weight: 2.6/ 3.1/ 3.6/ 4kg
Size: 242 x 88 x 205mm

CT-F300D

LiFePO4



POWER 300W **CAPACITY(Wh)**
Peak Power 500W 896 / 1004

Life Cycle: 3500(85%)
USB Output: USB*2 15W
AC output: 220V~240V(50Hz)
 100~120V(50Hz/60Hz)
AC Input: 250W
Solar Input: 12V~29V 300W
Weight: 9.2kg
Size: 305x127x214mm

GT500

LiFePO4



POWER 500W **CAPACITY (Wh)**
Peak Power 1000W 345/ 518

Life Cycle: 3500(85%)
USB Output: USB-A*3 (Total 30W)
USB-C Input/Output: PD*1: (60W) Max
DC Output: 12V=10A (120W Max)
AC Output: 220V~240V (50Hz)
 100~120V (50Hz /60Hz)
DC Input: 27V=4.5A, 121.5W
Solar / Car Charge: 12V~29V= 4.5A Max
Weight: 6.6/ 7kg
Size: 284 x 161 x 230mm

GT1200

LiFePO4



POWER 1200W **CAPACITY (Wh)**
Peak Power 2500W 1008

Life Cycle: 3500(85%)
USB Output: USB-A*3: (Total 30W)Max
USB-C Output: PD*1:(60W)Max
Cigar lighter output: 12V=10A(120W Max)
AC Output: 220~240Wac(50Hz)
 100=120V(50Hz/60Hz)
AC Input: 500W Max
Solar / Car Charge: 12V~29V=4~7A(Max 180W)
Weight: 11.8kg
Size: 400x210x290mm

GT1500

LiFePO4



POWER 1500W **CAPACITY (Wh)**
Peak Power 2500W 1008/ 1209

Life Cycle: 3500(85%)
USB Output: USB-A*3: (Total 30W) Max
USB-C Output: PD*1: (60W) Max
Cigar lighter output: 12V=10A (120W Max)
AC Output: 220V~240V (50Hz)
 100~120V (50Hz /60Hz)
DC Input: 27V=8.5A, 220W (7909)
Solar / Car Charge: 12V~29V= 8A Max
Weight: 14.9/ 17kg
Size: 400 x 210 x 290mm

Twila Series



PORTABLE POWER STATION



GT200

LiFePO4

POWER 200W
Peak Power 400W

CAPACITY (Wh)
192/ 230/ 307

Life Cycle: 3500(85%)
 USB Output: QC3.0*2: (18W) Max
 USB-C Input/Output: PD&QC3.0*1: (60W) Max
 DC Output: DC5521*2 (120W) Max
 AC Output: 220V-240V (50Hz)
 100-120V (50Hz /60Hz)

DC Input: 20V-3A, 60W(7909)
 Solar /Car Charge: 12V-29V=4A Max
 Weight: 3.1/ 3.6/ 4kg
 Size: 242 x 88 x 205mm



GT300

LiFePO4

POWER 300W
Peak Power 450W

CAPACITY (Wh)
307

Life Cycle: 3500(85%)
 USB Output: USB-A*2: (12W) Max
 USB-C Output: PD&QC3.0*1: (30W) Max
 Cigar Lighter Output: 12V=10A (120W Max)
 AC Output: 220V-240V (50Hz)
 100-120V (50Hz /60Hz)

DC Input: 15V=4A, 60W
 Solar /Car Charge: 12V-29V=4A Max
 Weight: 3.82/ 4.4kg
 Size: 257 x 160 x 165mm



GT600

LiFePO4

POWER 600W
Peak Power 1200W

CAPACITY (Wh)
384/ 691

Life Cycle: 3500(85%)
 USB Output: QC3.0*2: (18W) Max
 USB-C Output: PD&QC3.0*1: (60W) Max
 Cigar Lighter Output: 12V=10A (120W Max)
 AC Output: 220V-240V (50Hz)
 100-120V (50Hz /60Hz)

DC Input: 20V=6A, 120W
 Solar /Car Charge: 12V-29V=6A Max
 Weight: 6.4/ 7.8kg
 Size: 298 x 174 x 193mm



ST2000

LiFePO4

POWER 2200W
Peak Power 4000W

CAPACITY (Wh)
1536/ 2073

Life Cycle: 3500(85%)
 USB Output: USB-A*2: 18W Max
 USB-C Output: PD&QC3.0*1: 20V=1.35A (30W) Max
 PD&QC3.0*1: 20V=5A (100W) Max
 Cigar Lighter Output: 12V=10A (120W Max)
 DC Output: DC 5521*2 (120W Max)

AC Output: 220V-240V (50Hz)
 100-120V (50Hz /60Hz)
 AC Input: 1200W
 Solar /Car Charge: 12V-65V=20A Max
 Weight: 23.1/ 27.6kg
 Size: 411 x 260 x 355mm



CT3000S

LiFePO4

POWER 3000W
Peak Power 6000W

CAPACITY (Wh)
3840

Life Cycle: 3500(85%)
 USB-A Output: 22.5W MAX
 TYPE-C Output: 45W MAX
 Cigar Lighter Output: 12V 10A 120W MAX
 DC Positive and Negative Terminals Output: 24V MAX

AC Output: 220V-240V (50Hz)
 100-120V (50Hz/60Hz)
 DC Input: 29.2V/20A
 Solar Charge: 30-46V 250W (10A) MAX
 Weight: 29kg
 Size: 570x400x230mm

Cosmos Series



FOLD SOLAR PANELS



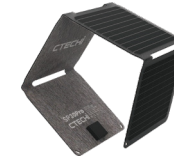
SP-10 FOLD SOLAR PANELS

POWER:	10W
Conversion Rate:	24%
USB-A Output:	5V-2A
Unfold Size:	393 x 224 x 3mm
Fold Size:	193 x 224 x 17mm
Weight:	200g



SP-20 FOLD SOLAR PANELS

POWER:	20W
Conversion Rate:	24%
USB-A Output:	5V-3A
USB-C Output:	5V-3A
Unfold Size:	670 x 217 x 2mm
Fold Size:	220 x 217 x 28mm
Weight:	396g



SP-30 FOLD SOLAR PANELS

POWER:	30W
Conversion Rate:	24%
USB-A Output:	5V-3A/9V-2A/12V-1.5A
USB-C Output:	5V-3A/9V-2A/12V-1.5A
Unfold Size:	904 x 255 x 3mm
Fold Size:	226 x 255 x 40mm
Weight:	580g



SP-40 FOLD SOLAR PANELS

POWER:	40W
Conversion Rate:	24%
USB QC3.0 Output:	5V-3A/9V-2A/12V-1.5A
USB-C PD2.0 Output:	40W
DC5521 Output:	19V-2.1A
Unfold Size:	1142 x 250 x 3mm
Fold Size:	226 x 250 x 38mm
Weight:	750g



SP-100 FOLD SOLAR PANELS

POWER:	100W
Conversion Rate:	23%
Rging Cord:	DC 5521
USB-A Output:	5V-3A(MAX)
USB-A Output:	QC3.0 (18W)
USB-C Output	PD (45W)
Unfold Size:	1315 x 535 x 6mm
Fold Size:	660x535 x38mm
Weight:	4.5kg



SP-200 FOLD SOLAR PANELS

POWER:	200W
Conversion Rate:	23%
Rging Cord:	MC4 Output
Unfold Size:	2435x535 x6mm
Fold Size:	655x535x50mm
Weight:	7.5kg



SP-300 FOLD SOLAR PANELS

POWER:	300W
Conversion Rate:	23%
Rging Cord:	MC4 Output
Unfold Size:	2080 x910x20mm
Fold Size:	910x710x25mm
Weight:	11.8kg



CTSP-200 FOLD SOLAR PANELS

Peak Power	200W
Cell Type	Mono
Conversion Efficiency	≥23%
Optimum Operating Voltage (Vmp)	36V
Optimum Operating Current (Imp)	5.15A
Open-Circuit Voltage (Voc)	43.7V
Short-Circuit Current (Isc)	6.15A
Maximum System Voltage	1000V
Output Port	MC4
Water Absorption Rate	≤2.5%(24H)
Unfolded Size	1162*1113MM
Net Weight	4.3KG



CTSP-400 FOLD SOLAR PANELS

Peak Power	400W
Cell Type	Mono
Conversion Efficiency	≥23%
Optimum Operating Voltage (Vmp)	54V
Optimum Operating Current (Imp)	7.4A
Open-Circuit Voltage (Voc)	64.8V
Short-Circuit Current (Isc)	8.9A
Maximum System Voltage	1000V
Output Port	MC4
Water Absorption Rate	≤2.5%(24H)
Unfolded Size	2371*1001mm(±2mm)
Net Weight	6.35KG

Lithium 220V 1~3KVA

Lithium UPS 1:1phase PF:0.9



Features:

- High frequency on-line double conversion
- DSP (Digital signal processors) control
- Active input power factor correction 0.99
- Long battery lifecycle, more than 2000
- Generator compatible
- Cold start & Economic operation mode (ECO)
- Wide input voltage range 90V~300V and frequency range 40~70Hz
- 50Hz / 60Hz Frequency auto sensing
- Frequency converter mode: 50Hz input / 60Hz output or 60Hz input / 50Hz output.
- Li-ion battery provide up to 3x backup time, comparing with regular Lead-acid UPS product
- Dry contact interface for BMS dominant control
- Incorporated MODBUS (RS485) interface with BMS
- Li-ion Battery Charger : Constant current , constant voltage, floating, turn-off 4 state charger for Li-ion battery, open to customize the logical behavior for customer- specified battery pack

Tower Model	Li HV C1K	Li HV C1KS	Li HV C2K	Li HV C2KS	Li HV C3K	Li HV C3KS
Rack Model	Li HV R1K	Li HV R1KS	Li HV R2K	Li HV R2KS	Li HV R3K	Li HV R3KS
Capacity	1KVA/900W		2KVA/1.8KW		3KVA/2.7KW	
AC INPUT						
Wiring	L/N+PE					
Rated Voltage	208/220/230/240VAC					
Voltage Range	90~300VAC					
Frequency Range	40Hz~70Hz					
Input Power Factor	≥0.99					
AC OUTPUT						
Wiring	L/N+PE					
Output Voltage	208/220/230/240VAC					
Voltage Regulation	±1%					
Output Frequency	50/60±4Hz(Sync mode) ; 50/60Hz±0.1%(Free run)					
Waveform	Pure sine wave					
Distortion(THDV%)	<2%(Linear load); <7%(Non-Linear load)					
Overload Capability	100%~105% continuous; 60Sec.@105%~130% rated load; 10Sec.@130%~150% rated load; 0.3Sec.@>150% rated load.					
EFFICIENCY						
Line Mode	88%		89%		90%	
Battery Mode	88%		87%		88%	
BATTERY & CHARGER						
Rated Battery Voltage	48VDC(default for 15cell of LiFePO4)					
Battery Capacity	600WH	External battery depends	1000WH	External battery depends	1000WH	External battery depends
Backup Time	>40mins @ half load		>30mins @ half load		>20mins @ half load	
Charging Current	4A/8A					
Charging Voltage	52.8V(default for 15cell of LiFePO4)/Customized according to battery request					
Charger Behavior &Protection	CC.CV. floating. turn-off 4 states 3 over voltage protection loop, preserve interface for over temperature/over pressure switch off interface					
HMI						
LED Display	Mains / battery status, load level, battery level, operation mode					
LCD Display with LED Indicator	Input mains voltage, frequency, load level, operation mode, health status					
Standards Communication Interface	(1)RS232 port / (2) Network card: support SNMP/TCP/IP protocol, for remote monitor the UPS via smart phone APP, web page, PC monitor software, support server / NAS shutdown / (3)Dry contact interface for BMS control / (4)MODBUS For BMS interface					
ENVIRONMENT						
Temperature Range	-10~50°C					
Relative Humidity	0-98% (Non-condensing)					
Acoustics Noise	<55dB @ 1 meters					
PHYSICAL						
Tower Dimension WxDxH (mm)	C1K:190x378x318 C1KS:145x397x220		C2K:190x427x318 C2KS:145x397x220		C3K:190x427x318 C3KS:190x378x318	
Rack Dimension WxDxH(mm)	R1K:440x400x88(2U) R1KS:440x400x88 (2U)		R2K:440x500x88(2U) R2KS: 440x400x88(2U)		R3K:440x650x88(2U) R3KS:440x400x88 (2U)	
Tower N.W (kg)	10.8	5	16.5	5.5	18	7.9
Rack N.W (kg)	12.5	6.5	21.6	6.8	24.5	8.2

Product specifications are subject to change without prior notice.

Tower Model	LI HV C6KS	LI HV C10KS
Rack Model	LI HV R6KS	LI HV R10KS
Capacity	6KVA / 5.4KW	10KVA / 9KW
AC INPUT		
Input System	Single phase (L/N+PE)	
Nominal Voltage	208/ 220/ 230/ 240VAC	
Frequency	50/60Hz	
Voltage Range	90~300VAC	
Frequency Range	(40~70)+0.5HZ	
Input Power Factor	>0.99	
BATTERY INPUT		
Charging Voltage	216V(default for 60cell of LiFePO4)/Customized according to battery request	
Battery Capacity	External	
Charger Behavior & Protection	CC. CV. floating, turn-off 4 states 3 over voltage protection loop, preserve interface for over temperature/over pressure switch off interface	
Charging Current	Long backup time model : 4A/8A (optional)	
AC OUTPUT		
Output Wiring System	Single phase (L/N+PE)	
Inverter Output Voltage	208/ 220/230/240VAC+1%	
Waveform	Pure sine wave	
Harmonic Distortion	THD<2% (linear load) ; THD<7% (non-linear load)	
Output Frequency	50/60+4Hz (Sync mode); 50/60Hz+0.1%(Fix freq.mode)	
Overload Capability	100%~105% continuous; 60Sec.@105%~130% rated load;10Sec.@130%~150% rated load; 0.3Sec.@>150% rated load.	
Transfer Time	Line mode <-> Battery mode : 0ms	
EFFICIENCY		
Line Mode	>92%	>93%
Battery Mode	>90%	
OTHERS		
Standards Communication Interface	(1)RS232 port / (2) Network card: support SNMP,TCP/IP protocol , for remote monitor the UPS via smart phone APP, web page, PC monitor software, support server / NAS shutdown / (3)Dry contact interface for BMS control / (4)MODBUS For BMS interface	
Alarm Function	AC/DC input under abnormal, overload condition and inverter problems	
Protection Function	AC input or output above or below the range of voltage, overload, over temperature and short circuit protection	
ENVIRONMENT		
Temperature Range	-10~50°C	
Relative Humidity	0-98%(Non-condensing)	
Acoustics Noise	<55dB @ 1 meters	
PHYSICAL		
Tower Dimension WxDxH(mm)	190x378x318	190x546x340
Rack Dimension WxDxH(mm)	439.4x500x88(2U)	439.4x500x88(2U)
Tower N.W (kg)	14.8	16
Rack N.W (kg)	11.5	13.5

Product specifications are subject to change without prior notice.

Lithium 220V 6~10KVA

Lithium UPS 1:1phase PF:0.9



Features:

- DSP (Digital signal processors) control
- Active input power factor correction, input power factor> 0.99
- Three level inverter technology,lower harmonic,higher efficiency
- Wide input voltage range 90V~300V and frequency range 40~70Hz
- Generator compatible
- Long battery lifecycle, more than 2000
- Remote on off (ROO) function (optional)
- Cold start & Economic operation mode (ECO)
- 50Hz / 60Hz Frequency auto sensing
- Frequency converter mode: 50Hz input / 60Hz output or 60Hz input / 50Hz output
- Li-ion battery provide up to 3x backup time, comparing with regular Lead-acid UPS product
- Dry contact interface for BMS dominant control
- Incorporated MODBUS (RS485) interface with BMS
- Li-ion Battery Charger : Constant current , constant voltage, floating, turn-off 4 state charger for Li-ion battery, open to customize the logical behavior for customer- specified battery pack

Lithium 110V 1~3KVA

Lithium UPS 1:1phase PF:0.9
110V In / 110V Out



Features:

- High frequency on-line double conversion
- DSP (Digital signal processors) control
- Active input power factor correction 0.99
- Long battery lifecycle, more than 2000
- Generator compatible
- Cold start & Economic operation mode (ECO)
- Wide input voltage range 60~145V and frequency range 40~70Hz
- 50Hz / 60Hz Frequency auto sensing
- Frequency converter mode: 50Hz input / 60Hz output or 60Hz input / 50Hz output.
- Li-ion battery provide up to 3x backup time, comparing with regular lead-acid UPS product
- Dry contact interface for BMS dominant control
- Incorporated MODBUS (RS485) interface with BMS
- Li-ion Battery Charger : Constant current , constant voltage, floating, turn-off 4 state charger for Li-ion battery, open to customize the logical behavior for customer- specified battery pack

Tower Model	LI LV C1K	LI LV C1KS	LI LV C2K	LI LV C2KS	LI LV C3K	LI LV C3KS
Rack Model	LI LV R1K	LI LV R1KS	LI LV R2K	LI LV R2KS	LI LV R3K	LI LV R3KS
Capacity	1KVA / 900W		2KVA / 1.8KW		3KVA / 2.7KW	
Phase	Single phase input single phase output					
AC INPUT						
Wiring	1 phase 3wires (L/N+PE)					
Rated Voltage	110/115/120/127VAC					
Voltage Range	Line-Neutral: 60~145VAC					
Frequency Range	40Hz~70Hz					
Input Power Factor	≥0.99					
AC OUTPUT						
Wiring	L/N+PE					
Output Voltage	110/115/120/127VAC					
Voltage Regulation	±1%					
Output Frequency	50/60±4Hz(Sync mode); 50/60Hz±0.1%(Free run)					
Waveform	Pure sine wave					
Distortion(THDV%)	<2%(Linear load); <8%(Non-Linear load)					
Overload Capability	100%~105% continuous; 60Sec.@105%~130% rated load; 10Sec.@130%~150% rated load; 0.3Sec.@>150% rated load					
EFFICIENCY						
Line Mode	88%		89%		90%	
Battery Mode	86%		87%		88%	
BATTERY & CHARGER						
Rated Battery Voltage	48VDC(default for 15cell of LiFePO4)					
Battery Capacity	600WH	External battery depends	1000WH	External battery depends	1000WH	External battery depends
Backup Time	>40mins @ half load		>30mins @ half load		>20mins @ half load	
Charging Current	4A/8A					
Charging Voltage	52.8V(default for 15cell of LiFePO4) / Customized according to battery request					
Charger Behavior &Protection	CC. CV. floating, turn-off 4 states 3 over voltage protection loop, preserve interface for over temperature/over pressure switch off interfac					
HMI						
LED Display	Mains / battery status, load level, battery level, operation mode					
LCD Display with LED Indicator	Input mains voltage, frequency, load level, operation mode, health status					
Standards Communication Interface	(1)RS232 port / (2) Network card: support SNMP/TCP/IP protocol, for remote monitor the UPS via smart phone App, web page, PC monitor software, support server / NAS shutdown / (3)Dry contact interface for BMS control / (4)MODBUS For BMS interface					
ENVIRONMENT						
Temperature Range	-10~50°C					
Relative Humidity	0-98% (Non-condensing)					
Acoustics Noise	<55dB @ 1 meters					
PHYSICAL						
Tower Dimension WxDxH (mm)	C1K:190x378x318 C1KS:145x397x220		C2K:190x427x318 C2KS:145x397x220		C3K:190x427x318 C3KS:190x378x318	
Rack Dimension WxDxH(mm)	R1K:440x400x88(2U) R1KS:440x400x88(2U)		R2K:440x500x88(2U) R2KS:440x400x88(2U)		R3K:440x650x88(2U) R3KS:440x400x88(2U)	
Tower N.W (kg)	10.8	5	16.5	5.5	18	7.9
Rack N.W (kg)	12.5	6.5	21.6	6.8	24.5	8.2

Product specifications are subject to change without prior notice.

Tower Model	LI LV C6KS	LI LV C10KS
Rack Model	LI LV R6KS	LI LV R10KS
Capacity	6KVA / 5.4KW	10KVA / 9KW
AC INPUT		
Input System	Single phase (L/N+PE)	
Nominal Voltage	100/110/120/127VAC	
Frequency	50/60Hz	
Voltage Range	60-145Vac±3VAC	
Frequency Range	(40~70)±0.5Hz	
Input Power Factor	>0.99	
Bypass Voltage Range	80~140VAC×(1±3%)	
BATTERY INPUT		
Charging Voltage	216V(default for 60cell of LiFePO4) / Customized according to battery request	
Battery Capacity	External	
Charger Behavior &Protection	CC, CV, floating, turn-off 4 states 3 over voltage protection loop, preserve interface for over temperature/over pressure switch off interface	
Charging Current	Long backup time model : 4A/8A (optional)	
AC OUTPUT		
Output Wiring System	Single phase (L/N+PE)	
Inverter Output Voltage	100/110/120/127VAC ± 2%	
Waveform	Pure sine wave	
Harmonic Distortion	THD<2% (linear load); THD<7% (non-linear load)	
Output Frequency	50/60±4Hz(Sync mode); 50/60Hz±0.1% (Fix freq.mode)	
Overload Capability	105~125%z60s;126~150%z30s,The recover point is 70%.	
Transfer Time	Line mode <-> Battery mode: 0ms	
EFFICIENCY		
Line Mode	>92%	>93%
Battery Mode	>90%	
OTHERS		
Standards Communication Interface	(1)RS232 port / (2) Network card: support SNMP,TCP/IP protocol, for remote monitor the UPS via smart phone APP, web page, PC monitor software, support server / NAS shutdown / (3)Dry contact interface for BMS control / (4)MODBUS For BMS interface	
Alarm Function	AC/DC input under abnormal, overload condition and inverter problems	
Protection Function	AC input or output above or below the range of voltage, overload, over temperature and short circuit protection	
ENVIRONMENT		
Temperature Range	-10~50°C	
Relative Humidity	0-98%(Non-condensing)	
Acoustics Noise	<55dB @ 1 meters	
PHYSICALT		
Tower Dimension WxDxH (mm)	190x546x340	239x555x528
Rack Dimension WxDxH(mm)	439.4x500x88 (2U)	439.4x530x176(4U)
Tower N.W (kg)	16	26.1
Rack N.W (kg)	15	26.1

Product specifications are subject to change without prior notice.

Lithium 110V 6~10KVA

Lithium UPS 1:1phase PF:0.9

110V In / 110V Out



Features:

- DSP (Digital signal processors) control
- Active input power factor correction, input power factor> 0.99
- Three level inverter technology, lower harmonic, higher efficiency
- Wide input voltage range 90V~300V and frequency range 40~70Hz
- Generator compatible
- Long battery lifecycle, more than 2000
- Remote on off (ROO) function (optional)
- Cold start & Economic operation mode (ECO)
- 50Hz / 60Hz Frequency auto sensing
- Frequency converter mode: 50Hz input / 60Hz output or 60Hz input / 50Hz output
- Li-ion battery provide up to 3x backup time, comparing with regular Lead-acid UPS product
- Dry contact interface for BMS dominant control
- Incorporated MODBUS (RS485) interface with BMS
- Li-ion Battery Charger : Constant current , constant voltage, floating, turn-off 4 state charger for Li-ion battery, open to customize the logical behavior for customer- specified battery pack

CAR EMERGENCY JUMP STARTER



Diesel



Gas



Motorcycle



Lawn Mower



Yacht



CT-07

Battery Capacity:	10000mAh
Starting Current:	600A
Peak Current:	1200A
TYPE-C Output (PD45W):	5V/3A, 9V/2A, 12V/1.5A, 15V/3A, 20V/2.25A
USB-A Output (QC3.0):	5V/3A, 9V/2A, 12V/1.5A
Fast Charging Time:	About 1 hour (charger must support PD45W or above)
Weight:	410g
Strong Flashlight	
Material:	PC + ABS casing
Dimensions:	176*83*31.5mm



CT-22

Battery Capacity:	10000mAh
Starting Current:	1500A
Peak Current:	3000A
TYPE-C Output (PD45W):	5V/3A, 9V/2A, 12V/1.5A, 15V/3A, 20V/2.25A
USB-A Output (QC3.0):	5V/3A, 9V/2.1A, 12V/1.5A
Fast Charging Time:	About 1 hour (charger must support PD45W or above)
Weight:	480g
Strong Flashlight	
Material:	PC + ABS casing
Dimensions:	191*89*39.5mm



CT-23

Battery Capacity:	10000mAh
Starting Current:	1500A
Peak Current:	3000A
TYPE-C Output (PD45W):	5V/3A, 9V/2A, 12V/1.5A, 15V/3A, 20V/2.25A
USB-A Output (QC3.0):	5V/3A, 9V/2.1A, 12V/1.5A
Fast Charging Time:	About 1 hour (charger must support PD45W or above)
Weight:	420g
Strong Flashlight	
Material:	PC + ABS casing
Dimensions:	192*78*41.5mm

CHARGE & JUMP STARTER POWER PACK



CTQ-05

Battery Capacity:	10000mAh/37Wh (Optional 14500mAh)
Starting Voltage:	12V (Gasoline car - 6.0L, Diesel car - 3.0L)
Starting Current:	1000A/2000A (Max)
Type-C Input/Output (PD45W):	5V/3A, 9V/2A, 12V/1.5A, 15V/3A, 20V/2.25A.
USB-A Output (QC3.0/18W):	5V3A, 9V2A, 12V1.5A
Fast Charging Time:	1 hour (When using a PD45W charger or higher)
Weight:	780g
Strong Flashlight	
Material:	PC+ABS outer casing, high-temperature resistant material for internal support, safer
Dimensions:	199*97*50mm
Pressure Range:	4~150PSI
Air Pump:	22-cylinder with 390 motor
Sensor Accuracy:	±0.5 PSI



CTQ-08

Battery Capacity:	10000mAh/37Wh (Optional 14500mAh)
Starting Voltage:	12V (Gasoline car - 6.0L, Diesel car - 3.0L)
Starting Current:	1000A/2000A (Max)
Type-C Input/Output (PD45W):	5V/3A, 9V/2A, 12V/1.5A, 15V/3A, 20V/2.25A.
USB-A Output (QC3.0/18W):	5V3A, 9V2A, 12V1.5A
Fast Charging Time:	1 hour (When using a PD45W charger or higher)
Weight:	780g
Strong Flashlight	
Material:	PC+ABS outer casing, high-temperature resistant material for internal support, safer
Dimensions:	199*97*50mm
Pressure Range:	4~150PSI
Air Pump:	22-cylinder with 390 motor
Sensor Accuracy:	±0.5 PSI



Diesel



Gas



Motorcycle



Lawn Mower



Yacht

AUTOMOTIVE EMERGENCY JUMP STARTER POWER BANK



Diesel



Gas



Motorcycle



Lawn Mower



Yacht



CT-06A

Battery Capacity:	10000mAh
Starting Current:	600A
Peak Current:	1200A
TYPE-C Input/Output:	(PD45W) 5V/3A, 9V/2A, 12V/1.5A, 15V/3A, 20V/2.25A
USB-A Output (QC3.0/18W):	5V3A, 9V2A, 12V1.5A
Fast Charging Time:	1 hour (When using a PD45W charger or higher)
Weight:	355g
Material:	PC+ABS casing
Dimensions:	227*55*55mm

Strong Flashlight, comes with a tripod, designed for fishing enthusiasts.



CT-06B

Battery Capacity:	10000mAh
Starting Current:	600A
Peak Current:	1200A
TYPE-C Input/Output:	(PD45W) 5V/3A, 9V/2A, 12V/1.5A, 15V/3A, 20V/2.25A
USB-A Output (QC3.0/18W):	5V3A, 9V2A, 12V1.5A
Fast Charging Time:	1 hour (When using a PD45W charger or higher)
Weight:	355g
Material:	PC+ABS casing
Dimensions:	227*55*55mm

Strong Flashlight, comes with a tripod, 4 powerful lights supporting multiple modes, customizable white light, red light, yellow light, blue light, etc.